



了解盖勒克思

UNDERSTANDS GAILEKESI



Gailekesi Delicate &

classic Display quality

盖勒克思...精致·经典 彰显品质



目录

CONTENTS

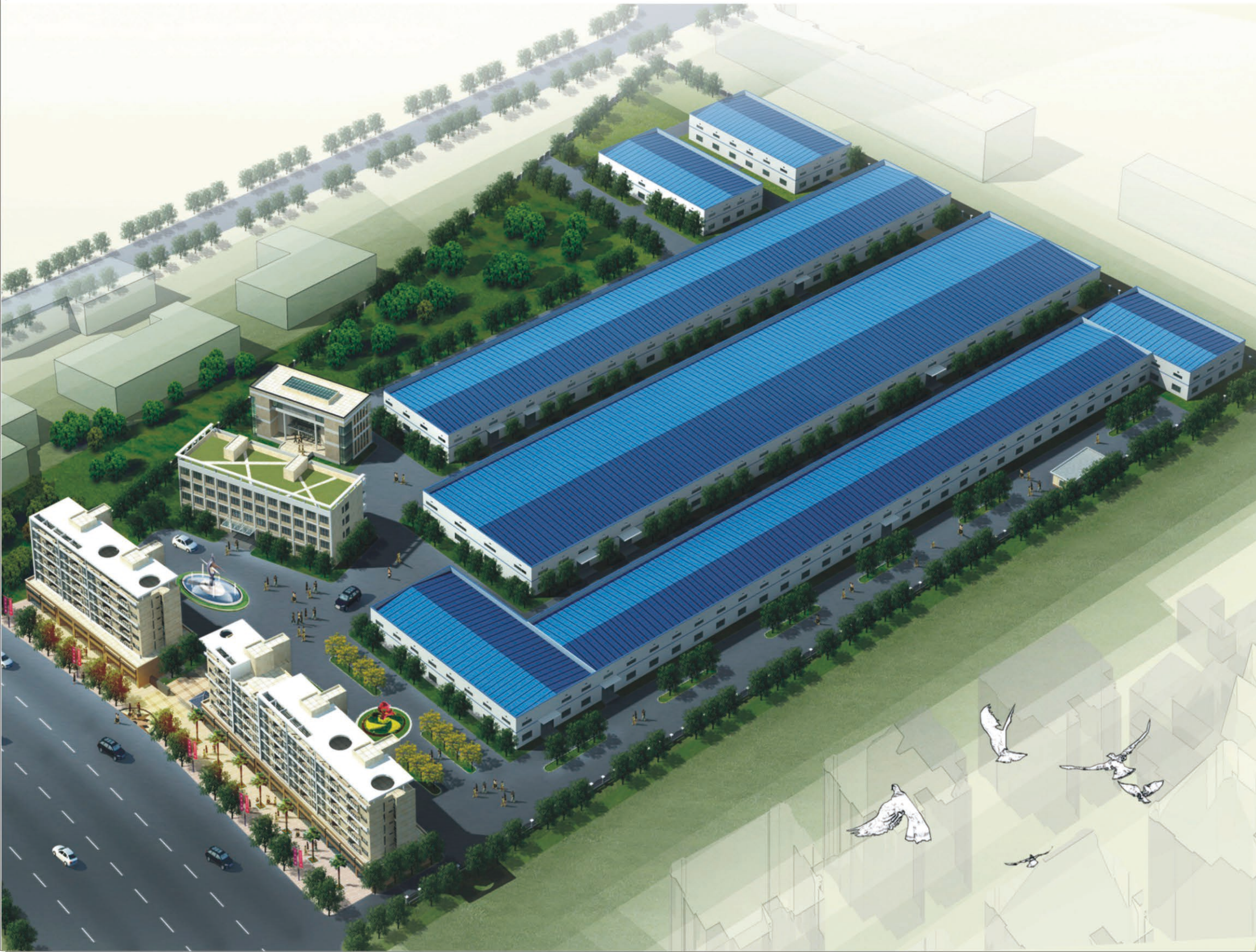
企业简介 COMPANY PROFILE	
企业文化 CORPORATE CULTURE	
企业荣誉 COMPANY HONOR	
A.光幕系列 LIGHT CURTAIN SERIES	05
B.风扇系列 FAN SERIES	09
C.限速器系列 GOVERNOR MACHINE SERIES	11
D.安全钳系列 SAFETY GEAR SERIES	14
E.门机系列 DOOR OPERATOR SERIES	16
F.缓冲器系列 OIL BUFFER SERIES	17
G.门锁系列 DOOR LOCK SERIES	19
H.导靴系列 GUIDE SHOE SERIES	21
I.油壶系列 OIL CAN	33
J.绳头系列 ROPE HEAD SERIES	35
K.靴衬系列 SHOE LINING SERIES	37
L.检修箱系列 REPAIR BOX SERIES	42
M.开关系列 SWITCH SERIES	45
N.门滑块系列 DOOR SLIDE SERIES	50
O.轮子系列 WHEEL SERIES	52
P.门刀系列 DOOR KNIFE SERIES	57

Q.三角锁系列 TRIANGLE LOCK SERIES	58
R.对讲机系列 WALKIE-TALKIE SERIES	60
S.减震垫系列 DAMPING PAD SERIES	61
T.报站钟系列 STATION CLOCK SERIES	63
U.按钮系列 BUTTON SERIES	64
V.电源锁系列 POWER SUPPLY LOCK SERIES	65
W.门机层门零配件 DOOR MACHINE & LAYER GATE SPARE PARTS	66
X.触头触点系列 CONTACT SERIES	70
Y.操作箱和扶手系列 OPERATING BOX & HANDRAIL SERIES	71
Z.其他系列 OTHER SERIES	73



企业简介

COMPANY PROFILE



宁波盖勒克思机电设备有限公司位于宁波市北仑明州工业园，距北仑港口仅5公里，地理位置优越，交通便利。是一家专业从事电梯部件研发制造销售一体的高新技术企业，公司创建于2005年，拥有现代化标准厂房15000多平方米，和多台先进的机械加工设备，具有很强的加工能力及先进的检测设备。

公司产品日趋多元化，目前公司主要产品有，限速器，缓冲器，安全钳，光幕，导轨，靴寸，风扇，开关，门锁，门滑块，门挂轮，油壶，绳头组合，橡胶件等系列产品。公司已通过ISO9001:2008质量管理体系认证及中国CCC(3C)认证。产品品种齐全，产品以其卓越的品质和合理的价格，在国内外拥有良好的口碑成为电梯行业的知名品牌，产品远销至欧洲，南美，北美，澳大利亚，中东，印度，韩国，日本，东南亚等地，遍布全球各个国家及地区。

公司一直在努力也一直在前进，本着客户至上，品质第一，优质服务，信誉至上的准则。热忱为国内外客户服务，我们真诚欢迎国内外客户来人来电来函或网上洽谈协商和咨询，并感谢国内外广大客户的光顾和支持。

NingBo Galaxy Mechanical& Electrical Equipment Co.,LTD is located in Ningbo Beilun Mingzhou Industrial Park, only 5 kilometers away from sea port.It have convenient water, land and air transportation. Our factory was established in 2005, has a modern standard workshop more than 15000 square meters, and more than a number of advanced mechanical processing equipment and testing equipment.

Our main production series: over speed governor, hydraulic buffer, safety gear, lighting curtain, guide shoe, guide shoe busher, fan, door lock& switch,slide, oil, rope fastener, rubber shock pad series, etc.We successfully passed the ISO9001:2008 Quality System certification and CCC certification.The products have been widely used by hundreds of elevator enterprises with famous brand for its stable and superior quality, reasonable price, as well as high efficient and catering after-sales service. Our oversea markets,including the South America, Australia, India, South Korea, Japan, Southeast Asia and other countries.

We hope to establish stable and long business with our current old clients and cooperate with more new customers for mutual development and benefits. Welcome you to visit our factory and contact us by Email or Telephone.We promise all your inquiry or question will be replied in 24 hours except national holidays.

企业荣誉

COMPANY HONOR



实力铸就辉煌

STRENGTH OF CAST BRILLIANT

中国国家强制性产品认证证书
证书编号: 201501030282680
委托人名称、地址: 宁波嘉勒克机电设备有限公司
生产(制造)名称、地址: 宁波市北仑区新碶街道...
生产单位名称、地址: 宁波市北仑区新碶街道...
产品名称和系列、规格、型号: 柜式开关
发证日期: 2015年12月18日
有效期至: 2020年12月18日
证书有效期内证书的有效性依赖于获证机构的定期监督获得保持。
主任: 王培
中国质量认证中心

中国国家强制性产品认证证书
证书编号: 201501030282697
委托人名称、地址: 宁波嘉勒克机电设备有限公司
生产(制造)名称、地址: 宁波市北仑区新碶街道...
生产单位名称、地址: 宁波市北仑区新碶街道...
产品名称和系列、规格、型号: 柜式开关
发证日期: 2015年12月18日
有效期至: 2020年12月18日
证书有效期内证书的有效性依赖于获证机构的定期监督获得保持。
主任: 王培
中国质量认证中心

中国国家强制性产品认证证书
证书编号: 201501030282699
委托人名称、地址: 宁波嘉勒克机电设备有限公司
生产(制造)名称、地址: 宁波市北仑区新碶街道...
生产单位名称、地址: 宁波市北仑区新碶街道...
产品名称和系列、规格、型号: 柜式开关
发证日期: 2015年12月18日
有效期至: 2020年12月18日
证书有效期内证书的有效性依赖于获证机构的定期监督获得保持。
主任: 王培
中国质量认证中心

中国国家强制性产品认证证书
证书编号: 201501030282700
委托人名称、地址: 宁波嘉勒克机电设备有限公司
生产(制造)名称、地址: 宁波市北仑区新碶街道...
生产单位名称、地址: 宁波市北仑区新碶街道...
产品名称和系列、规格、型号: 柜式开关
发证日期: 2015年12月18日
有效期至: 2020年12月18日
证书有效期内证书的有效性依赖于获证机构的定期监督获得保持。
主任: 王培
中国质量认证中心

中国国家强制性产品认证证书
证书编号: 201501030282701
委托人名称、地址: 宁波嘉勒克机电设备有限公司
生产(制造)名称、地址: 宁波市北仑区新碶街道...
生产单位名称、地址: 宁波市北仑区新碶街道...
产品名称和系列、规格、型号: 柜式开关
发证日期: 2015年12月18日
有效期至: 2020年12月18日
证书有效期内证书的有效性依赖于获证机构的定期监督获得保持。
主任: 王培
中国质量认证中心

CERTIFICATE FOR CHINA COMPULSORY PRODUCT CERTIFICATION
No.: 201501030282700
NAME AND ADDRESS OF THE APPLICANT: Ningbo Gekelk Mechanical & Electrical Equipment Co., Ltd.
NAME AND ADDRESS OF THE MANUFACTURER: Ningbo Gekelk Mechanical & Electrical Equipment Co., Ltd.
NAME AND ADDRESS OF THE FACTORY: Ningbo Gekelk Mechanical & Electrical Equipment Co., Ltd.
NAME, MODEL AND SPECIFICATION: GCS-1000-1
Date of Issue: Dec. 18, 2015 Date of expiry: Dec. 18, 2020
Principal: Wang Pei
CHINA QUALITY CERTIFICATION CENTRE

CERTIFICATE FOR CHINA COMPULSORY PRODUCT CERTIFICATION
No.: 201501030282697
NAME AND ADDRESS OF THE APPLICANT: Ningbo Gekelk Mechanical & Electrical Equipment Co., Ltd.
NAME AND ADDRESS OF THE MANUFACTURER: Ningbo Gekelk Mechanical & Electrical Equipment Co., Ltd.
NAME AND ADDRESS OF THE FACTORY: Ningbo Gekelk Mechanical & Electrical Equipment Co., Ltd.
NAME, MODEL AND SPECIFICATION: GCS-1000-1
Date of Issue: Dec. 18, 2015 Date of expiry: Dec. 18, 2020
Principal: Wang Pei
CHINA QUALITY CERTIFICATION CENTRE

CERTIFICATE FOR CHINA COMPULSORY PRODUCT CERTIFICATION
No.: 201501030282699
NAME AND ADDRESS OF THE APPLICANT: Ningbo Gekelk Mechanical & Electrical Equipment Co., Ltd.
NAME AND ADDRESS OF THE MANUFACTURER: Ningbo Gekelk Mechanical & Electrical Equipment Co., Ltd.
NAME AND ADDRESS OF THE FACTORY: Ningbo Gekelk Mechanical & Electrical Equipment Co., Ltd.
NAME, MODEL AND SPECIFICATION: GCS-1000-1
Date of Issue: Dec. 18, 2015 Date of expiry: Dec. 18, 2020
Principal: Wang Pei
CHINA QUALITY CERTIFICATION CENTRE

CERTIFICATE FOR CHINA COMPULSORY PRODUCT CERTIFICATION
No.: 201501030282700
NAME AND ADDRESS OF THE APPLICANT: Ningbo Gekelk Mechanical & Electrical Equipment Co., Ltd.
NAME AND ADDRESS OF THE MANUFACTURER: Ningbo Gekelk Mechanical & Electrical Equipment Co., Ltd.
NAME AND ADDRESS OF THE FACTORY: Ningbo Gekelk Mechanical & Electrical Equipment Co., Ltd.
NAME, MODEL AND SPECIFICATION: GCS-1000-1
Date of Issue: Dec. 18, 2015 Date of expiry: Dec. 18, 2020
Principal: Wang Pei
CHINA QUALITY CERTIFICATION CENTRE

CERTIFICATE FOR CHINA COMPULSORY PRODUCT CERTIFICATION
No.: 201501030282701
NAME AND ADDRESS OF THE APPLICANT: Ningbo Gekelk Mechanical & Electrical Equipment Co., Ltd.
NAME AND ADDRESS OF THE MANUFACTURER: Ningbo Gekelk Mechanical & Electrical Equipment Co., Ltd.
NAME AND ADDRESS OF THE FACTORY: Ningbo Gekelk Mechanical & Electrical Equipment Co., Ltd.
NAME, MODEL AND SPECIFICATION: GCS-1000-1
Date of Issue: Dec. 18, 2015 Date of expiry: Dec. 18, 2020
Principal: Wang Pei
CHINA QUALITY CERTIFICATION CENTRE

中国电梯协会
China Elevator Association
会员证书
(副本)
协会证字第 11208 号
单位名称: 宁波嘉勒克机电设备有限公司
(英文): Ningbo Gekelk Mechanical Equipment Co., Ltd.
地址: 浙江省宁波市北仑区明州西路 529 号
法定代表人: 黄再立
业务范围: 专业设计、研发、生产、销售电梯部件

A 光幕系列 LIGHT CURTAIN SERIES

品名: 电梯光幕

识别号: GLKS-A818/GECO-G17A61

GLKS-B828/GECO-G17B71

NAME: Light Curtain

ITEM NO.: GLKS-A818/GECO-G17A61

GLKS-B828/GECO-G17B71



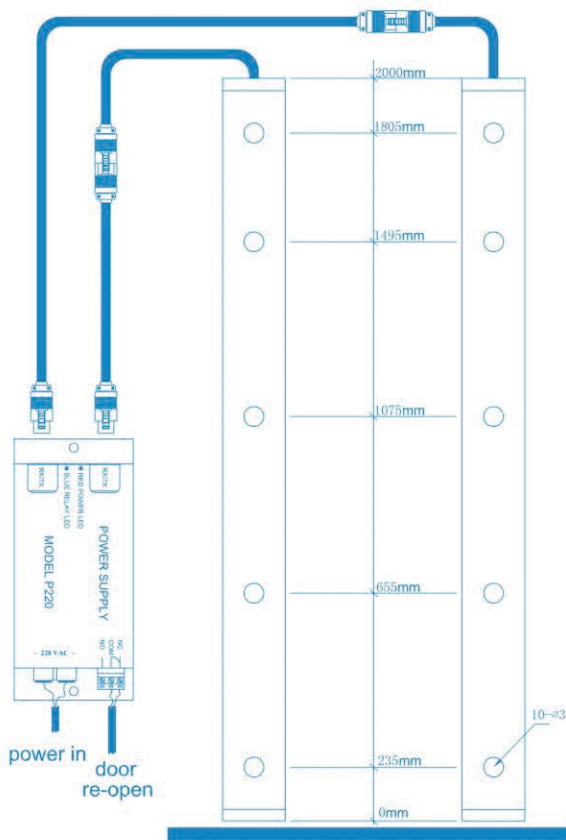
LIGHT CURTAIN SERIES 光幕系列 A

品名: 三菱二合一光幕

识别号: GLKS-E838/GECO-G17E71

NAME: Mitsubishi Light Curtain

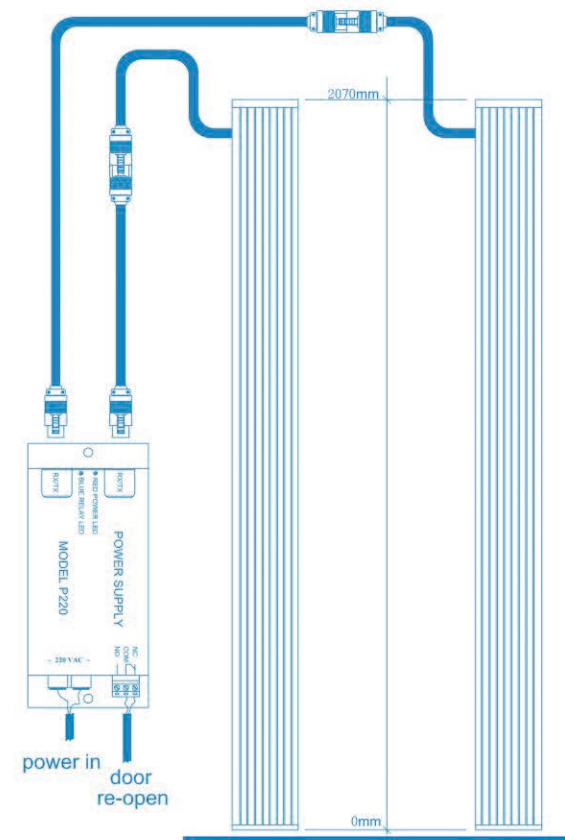
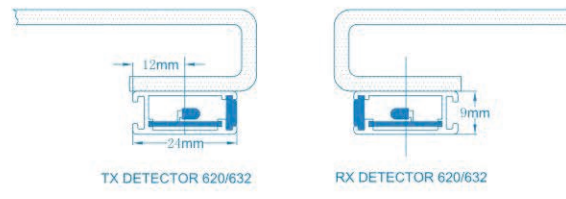
ITEM NO.: GLKS-E838/GECO-G17E71



TECHNICAL SPECIFICATIONS		
Model	GLKS-A818/GECO-G17A61	GLKS-B828/GECO-G17B71
Number of diodes	17	32
Distance between diodes:	116mm	58mm
Maximum beams (distance ≥ 400mm)	96 beams	154 beams
Minimum beams (distance < 400mm)	33 beams	94 beams
Highest beam	1823 mm	
Lowest beam	23 mm	
Size	9mm (thickness) x 24.5mm (width) x 2000mm (height)	
Detecting distance	0 - 4000mm	
Vertical displacement at 0mm	±20mm	
Horizontal displacement at 0mm	±3mm	
Angular displacement at 0mm	±10degrees	
Cable reliability	20 million door movements	
Light immunity	≥100,000 LUX	
EMC compliance	Emissions to EN12015, Immunity to EN12016	
Operating temperature range	-10°C ~ +65°C	
IP Rating	IP54	
Vibration test	Random vibration 20 to 500Hz 0.002g/2/Hz 4hrs per axis Sinusoidal vibration 30Hz 3.6g rms 30mins per axis	
Response Time (NPN or PNP)	45ms	65ms
Response Time (Relay)	60ms	80ms
Timeout Function	15Sec 3 non-adjacent diodes	15Sec 5 non-adjacent diodes

POWER SUPPLY UNIT (see detailed information in Page 27)	
Model P220	Input voltage 220V AC ± 20% 4VA
Model P110	Input voltage 110V AC ± 10% 4VA
Model P110/220	Input voltage 110/220V AC(Switchable) 4VA
Model P24	Input voltage 11-35V DC 3VA
Power supply relay : 250V AC 7A or 30V DC 7A	

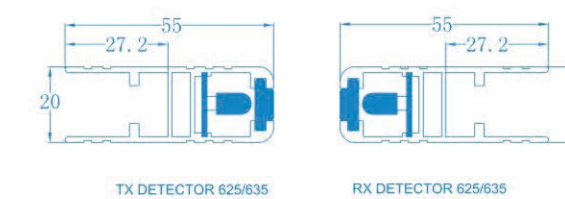
PNP/NPN (Without power supply unit) (see detailed information in Page 29)	
Input voltage	15-35V DC 3VA
Output modes	PNP-N/C · PNP-N/O · NPN-N/C · NPN-N/O
Output current	Maximum 200MA



TECHNICAL SPECIFICATIONS		
Model	GLKS-E838/GECO-G17E71(96)	GLKS-E838/GECO-G17E71(154)
Number of diodes	17	32
Distance between diodes:	116mm	58mm
Maximum beams (distance ≥ 400mm)	96 beams	154 beams
Minimum beams (distance < 400mm)	33 beams	94 beams
Highest beam	1823 mm	
Lowest beam	23 mm	
Size	20mm (thickness) x 55mm (width) x 2070mm (height)	
Detecting distance	0 - 4000mm	
Vertical displacement at 0mm	±20mm	
Horizontal displacement at 0mm	±3mm	
Angular displacement at 0mm	±10degrees	
Cable reliability	20 million door movements	
Light immunity	≥100,000 LUX	
EMC compliance	Emissions to EN12015, Immunity to EN12016	
Operating temperature range	-10°C ~ +65°C	
IP Rating	IP54	
Vibration test	Random vibration 20 to 500Hz 0.002g/2/Hz 4hrs per axis Sinusoidal vibration 30Hz 3.6g rms 30mins per axis	
Response Time (NPN or PNP)	45ms	65ms
Response Time (Relay)	60ms	80ms
Timeout Function	15Sec 3 non-adjacent diodes	15Sec 5 non-adjacent diodes

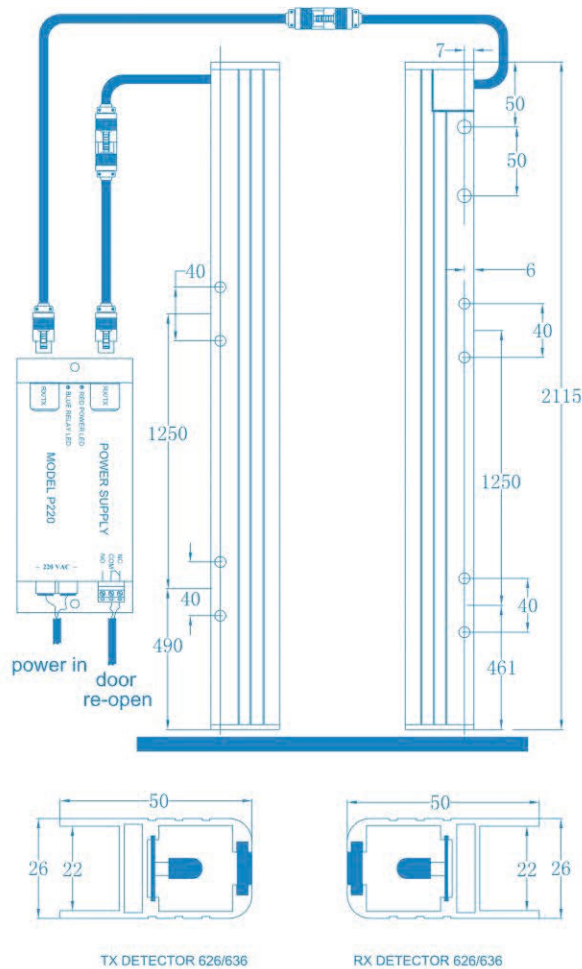
POWER SUPPLY UNIT (see detailed information in Page 27)	
Model P220	Input voltage 220V AC ± 20% 4VA
Model P110	Input voltage 110V AC ± 10% 4VA
Model P110/220	Input voltage 110/220V AC(Switchable) 4VA
Model P24	Input voltage 11-35V DC 3VA
Power supply relay : 250V AC 7A or 30V DC 7A	

PNP/NPN (Without power supply unit) (see detailed information in Page 29)	
Input voltage	15-35V DC 3VA
Output modes	PNP-N/C · PNP-N/O · NPN-N/C · NPN-N/O
Output current	Maximum 200MA



A. 光幕系列 LIGHT CURTAIN SERIES

品名: 日立二合一光幕
 识别号: GLKS-G848/GECO-G17G71
 NAME: Hitachi Light curtain
 ITEM NO.: GLKS-G848/GECO-G17G71



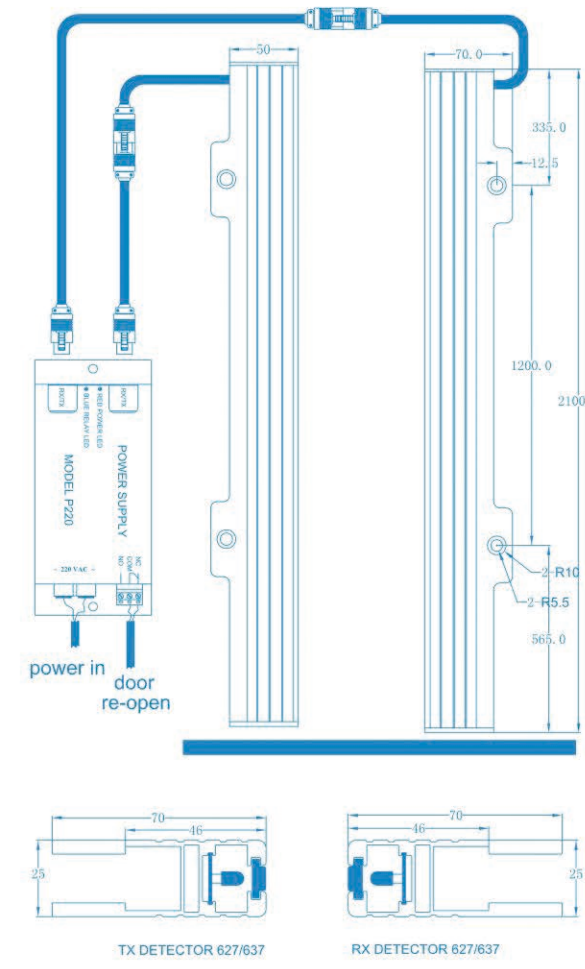
TECHNICAL SPECIFICATIONS		
Model	GLKS-G848/GECO-G17G71(96)	GLKS-G848/GECO-G17G71(154)
Number of diodes	17	32
Distance between diodes:	116mm	58mm
Maximum beams (distance \geq 400mm)	96 beams	154 beams
Minimum beams (distance<400mm)	33 beams	94 beams
Highest beam	1823 mm	
Lowest beam	23 mm	
Size	26mm (thickness) x 50mm (width) x 2115mm (height)	
Detecting distance	0 - 4000mm	
Vertical displacement at 0mm	\pm 20mm	
Horizontal displacement at 0mm	\pm 3mm	
Angular displacement at 0mm	\pm 10degrees	
Cable reliability	20 million door movements	
Light immunity	\geq 50,000 LUX	
EMC compliance	Emissions to EN12015, Immunity to EN12016	
Operating temperature range	-10°C~+65°C	
IP Rating	IP54	
Vibration test	Random vibration 20 to 500Hz 0.002g/2Hz 4hrs per axis Sinusoidal vibration 30Hz 3.6g rms 30mins per axis	
Response Time (NPN or PNP)	45ms	65ms
Response Time (Relay)	60ms	80ms
Timeout Function	15Sec 3 non-adjacent diodes	15Sec 5 non-adjacent diodes

POWER SUPPLY UNIT (see detailed information in Page 27)	
Model P220	Input voltage 220V AC \pm 20% 4VA
Model P110	Input voltage 110V AC \pm 10% 4VA
Model P110/220	Input voltage 110/220V AC(Switchable) 4VA
Model P24	Input voltage 11-35V DC 3VA
Power supply relay : 250V AC 7A or 30V DC 7A	

PNP/NPN (Without power supply unit) (see detailed information in Page 29)	
Input voltage	15-35V DC 3VA
Output modes	PNP-N/C · PNP-N/O · NPN-N/C · NPN-N/O
Output current	Maximum 200MA

LIGHT CURTAIN SERIES 光幕系列 A

品名: 东芝二合一光幕
 识别号: GLKS-F858/GECO-G17F71
 NAME: Toshiba light curtain
 ITEM NO.: GLKS-F858/GECO-G17F71



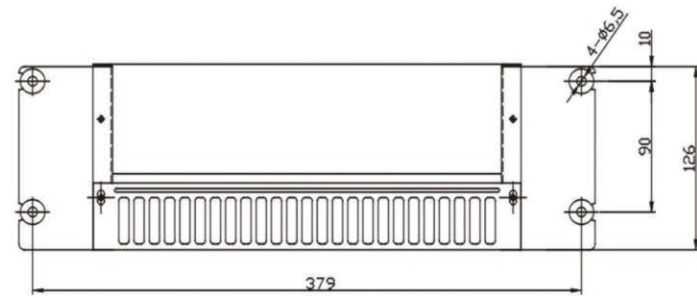
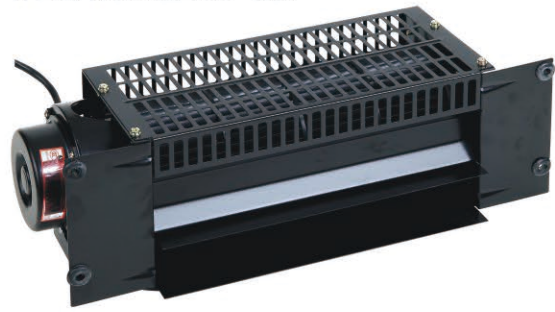
TECHNICAL SPECIFICATIONS		
Model	GLKS-F858/GECO-G17F71(96)	GLKS-F858/GECO-G17F71(154)
Number of diodes	17	32
Distance between diodes:	116mm	58mm
Maximum beams (distance \geq 400mm)	96 beams	154 beams
Minimum beams (distance<400mm)	33 beams	94 beams
Highest beam	1823 mm	
Lowest beam	23 mm	
Size	25mm (thickness) x 70mm (width) x 2100mm (height)	
Detecting distance	0 - 4000mm	
Vertical displacement at 0mm	\pm 20mm	
Horizontal displacement at 0mm	\pm 3mm	
Angular displacement at 0mm	\pm 10degrees	
Cable reliability	20 million door movements	
Light immunity	\geq 50,000 LUX	
EMC compliance	Emissions to EN12015, Immunity to EN12016	
Operating temperature range	-10°C~+65°C	
IP Rating	IP54	
Vibration test	Random vibration 20 to 500Hz 0.002g/2Hz 4hrs per axis Sinusoidal vibration 30Hz 3.6g rms 30mins per axis	
Response Time (NPN or PNP)	45ms	65ms
Response Time (Relay)	60ms	80ms
Timeout Function	15Sec 3 non-adjacent diodes	15Sec 5 non-adjacent diodes

POWER SUPPLY UNIT (see detailed information in Page 27)	
Model P220	Input voltage 220V AC \pm 20% 4VA
Model P110	Input voltage 110V AC \pm 10% 4VA
Model P110/220	Input voltage 110/220V AC(Switchable) 4VA
Model P24	Input voltage 11-35V DC 3VA
Power supply relay : 250V AC 7A or 30V DC 7A	

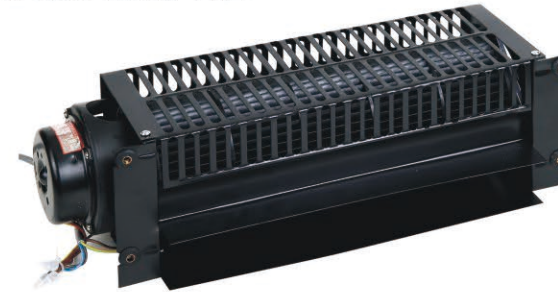
PNP/NPN (Without power supply unit) (see detailed information in Page 29)	
Input voltage	15-35V DC 3VA
Output modes	PNP-N/C · PNP-N/O · NPN-N/C · NPN-N/O
Output current	Maximum 200MA

B 风扇系列 FAN SERIES

品名: FB/9B横流风扇
 识别号: GLKS-B01
 NAME: FB/9BCross Flow Fan
 ITEM NO.: GLKS-B01



品名: 三菱330风扇
 识别号: GLKS-B04
 NAME: MITSUBISHI 330 Fan
 ITEM NO.: GLKS-B04

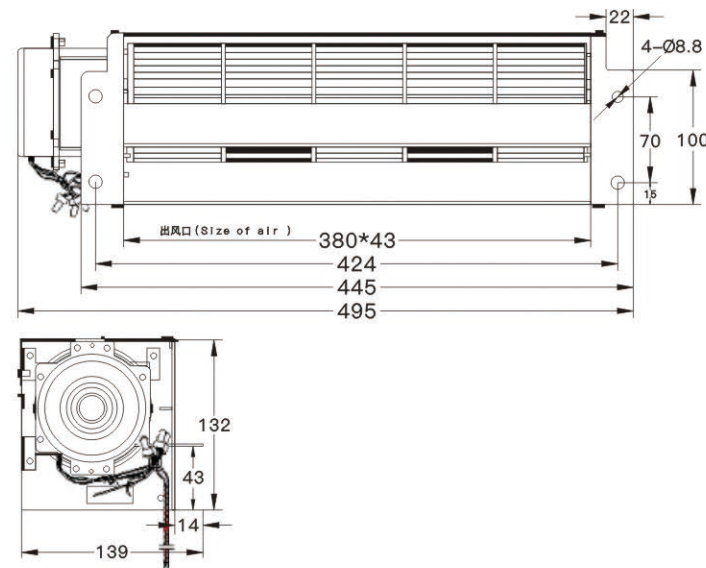


FAN SERIES 风扇系列 B

品名: 13B风扇
 识别号: GLKS-B05
 NAME: 13B Fan
 ITEM NO.: GLKS-B05



品名: 917L日立风扇
 识别号: GLKS-B02
 NAME: 917L Hitachi Cross Flow Fan
 ITEM NO.: GLKS-B02



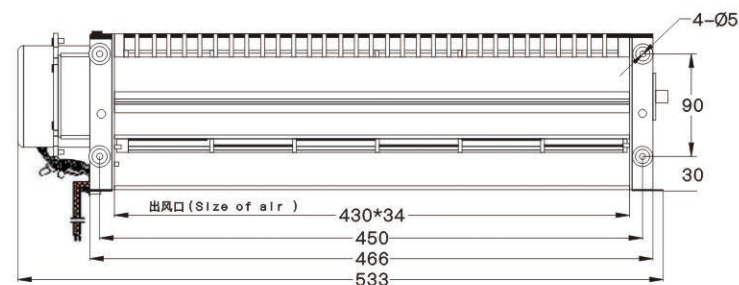
品名: RV140风扇
 识别号: GLKS-B06
 NAME: RV140 Fan
 ITEM NO.: GLKS-B06



品名: 风扇电机
 识别号: GLKS-B07
 NAME: Fan Motor
 ITEM NO.: GLKS-B07



品名: 1042风扇
 识别号: GLKS-B03
 NAME: 1042 Fan
 ITEM NO.: GLKS-B03



品名: 9K通力风扇
 识别号: GLKS-B08
 NAME: Kone 9K Fan
 ITEM NO.: GLKS-B08



品名: BRB圆风扇
 识别号: GLKS-B09
 NAME: BRB Fan
 ITEM NO.: GLKS-B09



品名：有机房单向限速器
识别号：GLKS-C01

NAME: One Way Governor With Machine Room
ITEM NO.: GLKS-C01

该产品下行配用于安全钳联动装置以控制安全钳动作，上行时可与同步电机制动器连接使用，具有双向检测电梯运行速度，并提供单向机械动作信号输出功能，测试动作及复位需手工操作。可满足有机房客货电梯的使用（主要针对具有同步电机制动器驱动的电梯）。符合标准：GB7588-2003及其EN81-1.1991。

The product down with forceps for security safety gear linkage control action, the rows can be connected to the synchronous motor brake is used, with two-way detection elevator running speed, and provide one way mechanical action signal output function, test actions and reset should be manual operation. Can meet with the use of the machine room passenger elevator (Can meet with the use of the machine room passenger elevator mainly aimed at a synchronous motor brake driven elevator). Up to standard:GB7588-2003&EN81-1.1991.

涵盖规格（额定速度）： $\leq 0.63\text{m/s}$ 0.75m/s 1.0m/s $1.5\sim 1.6\text{m/s}$ 1.75m/s 2.0m/s 2.5m/s
适用位置：轿厢侧及对重侧
技术参数：绳轮直径： $\phi 240\text{mm}$
限速钢绳：标配 $\phi 8\text{mm}$ ，可选配 $\phi 6\text{mm}$
接线说明：上下限速动作开关连接安全回路。

Cover the specifications(Rated speed): $\leq 0.63\text{m/s}$ 0.75m/s 1.0m/s $1.5\sim 1.6\text{m/s}$ 1.75m/s 2.0m/s 2.5m/s
Suitable location: Capsules side on the heavy side
Technical parameters: Rope wheel diameter: $\phi 240\text{mm}$
Speed limit wire rope: Standard $\phi 8\text{mm}$, fittings selection $\phi 6\text{mm}$
Wiring instructions: The speed limit has action switch connection safety loop.



品名：有机房双向限速器
识别号：GLKS-C02

NAME: Two Way Governor With Machine Room
ITEM NO.: GLKS-C02

该产品可配用于安全钳的联动保护，也可与同步电机制动器或机械触发的夹绳器连接使用，具有双向检测电梯运行速度，双向机械动作信号输出功能，测试动作及复位需手工操作。可满足常规有机房客货电梯的使用。符合标准：GB7588-2003及其EN81-1.1991。

The product can match the linkage protection for security clamp, can also be used with synchronous motor brake or mechanical trigger clip chain connection is used, with two-way detection elevator speed, two-way mechanical action signal output function, test cations and reset should be manual operation. Can meet the use of conventional have machine root, passenger elevator. Up to standard:GB7588-2003&EN81-1.1991.

涵盖规格（额定速度）： $\leq 0.63\text{m/s}$ 1.0m/s $1.5\sim 1.6\text{m/s}$ 1.75m/s 2.0m/s 2.5m/s
适用位置：轿厢侧及对重侧
技术参数：绳轮直径： 240mm
限速钢绳：标配 $\phi 8\text{mm}$ ，可选配 $\phi 6\text{mm}$
接线说明：上下限速动作开关连接安全回路。

Cover the specifications(Rated speed): $\leq 0.63\text{m/s}$ 1.0m/s $1.5\sim 1.6\text{m/s}$ 1.75m/s 2.0m/s 2.5m/s
Suitable location: Capsules side on the heavy side
Technical parameters: Rope wheel diameter: $\phi 240\text{mm}$
Speed limit wire rope: Standard $\phi 8\text{mm}$, fittings selection 6mm
Wiring instructions: The speed limit has cation switch connection safety loop.



品名：无机房单向限速器
识别号：GLKS-C03

NAME: One Way Governor Machine Roomless
ITEM NO.: GLKS-C03

该产品可配用于安全钳的联动保护，也可与同步电机制动器连接使用，具有双向检测电梯运行速度，单向动作信号输出功能，测试动作及复位可远程机械操作。可满足常规无机房客货电梯的使用。符合标准：GB7588-2003及其EN81-1.1991。

The product can match the linkage protection for security clamp, can also be used with synchronous motor brake is used, with two-way detection elevator speed, one-way action signal output function, test actions and reset should be manual operation. Can meet the use of conventional have machine room passenger elevator. Up to standard:GB7588-2003&EN81-1.1991.

涵盖规格（额定速度）： $\leq 0.63\text{m/s}$ 1.0m/s $1.5\sim 1.6\text{m/s}$ 1.75m/s
适用位置：轿厢侧及对重侧
技术参数：绳轮直径： $\phi 200\text{mm}$
限速钢绳： $\phi 6\text{mm}$
电气接线：限速动作开关连接安全回路

Cover the specifications(Rated speed): $\leq 0.63\text{m/s}$ 1.0m/s $1.5\sim 1.6\text{m/s}$ 1.75m/s
Suitable location: Capsules side on the heavy side
Technical parameters: Rope wheel diameter $\phi 200\text{mm}$
Speed limit wire rope: $\phi 6\text{mm}$
Electric Connection: Governor action safety circuit switch connection



品名：无机房电子式单向限速器
识别号：GLKS-C04

NAME: One Way Electronic Governor Machine Roomless
ITEM NO.: GLKS-C04

该产品主要针对无机房电梯的使用要求，在OX-240限速器的基础上，增加了可远程进行电气动作检测及自动复位的功能。主要应用于常规无机房布置形式的电梯。符合标准：GB7588-2003及其EN81-1.1991。

The product is mainly used for no-engineerom requirements, on the basis of OX-240 speed limiter, increased can be electric remote motion detection and automatic reset function. Mainly used in the conventional elevator without room decorate a form. Up to standard:GB7588-2003&EN81-1.1991.

涵盖规格（额定速度）： $\leq 0.63\text{m/s}$ 1.0m/s $1.5\sim 1.6\text{m/s}$ 1.75m/s
适用位置：轿厢侧及对重侧
技术参数：绳轮直径： $\phi 240\text{mm}$
限速钢绳：标配 $\phi 8\text{mm}$ ，可选配 $\phi 6\text{mm}$
接线说明：测试、复位动作电磁铁需提供DC24V或AC220V电源（具体根据要求的电磁铁型号），连续通电时间小于10秒；限速动作开关连接安全回路。

Cover the specifications(Rated speed): $\leq 0.63\text{m/s}$ 1.0m/s $1.5\sim 1.6\text{m/s}$ 1.75m/s
Suitable location: Capsules side on the heavy side
Technical parameters: Rope wheel diameter: $\phi 240\text{mm}$
Speed limit wire rope: Standard $\phi 8\text{mm}$, fittings selection $\phi 6\text{mm}$
Wiring instructions: Test action electromagnet shall provide DC 24V or AC220V power (specific according to the requirements of the electromagnet model), continuous Electricity time less than 10 seconds; speed limit action safety circuit switch connection.



品名：无机房双向限速器
识别号：GLKS-C05

NAME: Two Way Governor Machine Roomless
ITEM NO.: GLKS-C05

该产品上行时可配用于渐进式安全钳的联动保护，下行时与同步电机制动器等连接使用，具有双向检测电梯运行速度，双向动作信号输出功能，测试动作及复位实现远程电气控制。可满足常规无机房客货电梯的使用。
符合标准：GB7588-2003及其EN81-1.1991.

On the product line can match the linkage protection, safety gear for gradual downward with synchronous motor brake connection is used, such as have two-way detection elevator running speed ,two-way signal output function, test cation and reset to realize remote electrical control. Can meet the use of conventional machine room less passenger and cargo elevator.
Up to standard:GB7588-2003&EN81-1.1991.

涵盖规格（额定速度）：≤0.63m/s 0.75m/s 1.0m/s 1.5m/s~1.6m/s 1.75m/s
适用位置：轿厢侧及对重侧
技术参数：绳轮直径：φ240mm、φ200mm（仅适用V≤1.0m/s时）
限速钢绳：标配φ6mm，可选配φ8mm
电气接线：测试动作开关XS1-28需提供DC24V或AC220V电源（具体根据要求的电磁铁型号），连续通电时间≤10秒；限速动作开关XS1-23其中的开关接线连接安全回路，而线圈需提供DC24V或AC220V电源（具体根据要求的开关电压要求）（接线形式可参照上图）

Cover the specifications(Rated speed): ≤0.63m/s 0.75m/s 1.0m/s 1.5m/s~1.6m/s 1.75m/s
Suitable location: Capsules side on the heavy side
Technical parameters: Rope wheel diameter:φ240mm,φ200mm(only applicable when V≤1.0m/s or less)
Speed limit wire rope: Standard φ6mm,Fittings Selection φ8mm
Electric connection: Test action switch XS1-28 must provide DC24V or AC220V power (specific according to the requirements of the electromagnet model), continuous polarization time for 10 seconds or less; Speed limit action XS1-23of switch wiring connection safety circuit, the coil should be provided to provide DC24Vor AC220Vpower(depending on the demands of switch voltage)(you may refer to connection form above)

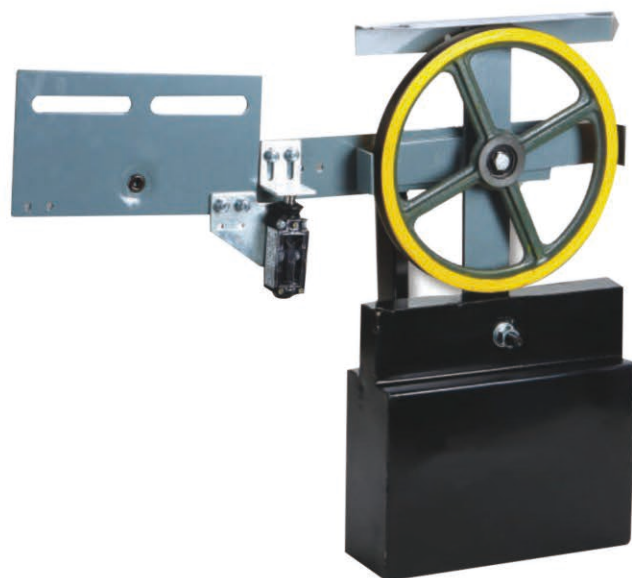


品名：240涨紧装置
识别号：GLKS-C06

NAME: Tension Device
ITEM NO.: GLKS-C06

本装置绳轮具体规格可根据限速器规格以及电梯实际使用状态进行匹配，安装调整方便，可适用平面布置紧凑的电梯结构要求。供多种配重规格选择使用，具体使用状态如表。确定本装置需明确以下参数：绳轮规格，匹配钢丝绳、配重质量，以及匹配的导轨型号等。

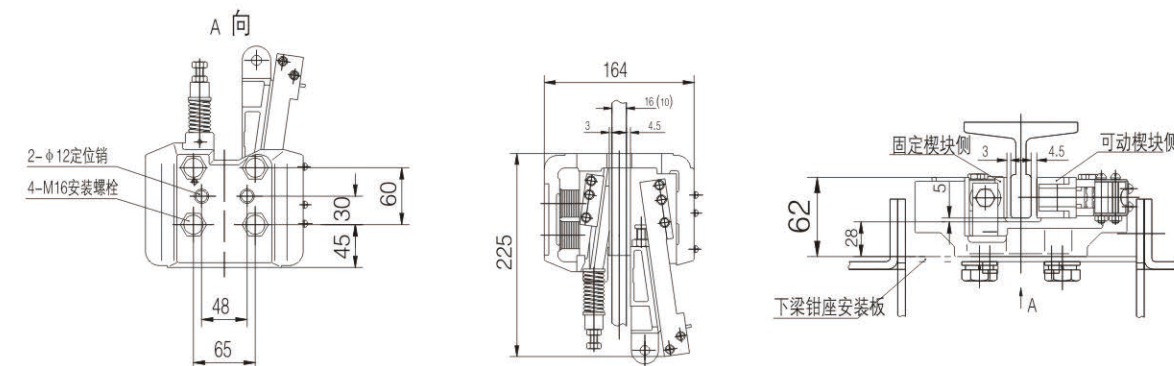
This device rope wheel specifications can be according to the specifications and the elevator over speed governor matching actual use status, easy to install, applicable compact layout of the elevator stucuture requirements. For the use of various specifications of balancing selection ,specific use state table. This device needs to clear the following parameters: rope wheel, weight, quality, specifications, match, wire rope, and matching of guide rail type, etc.



品名：渐进式安全钳
识别号：GLKS-D01

NAME: Progressive Safety Gear
ITEM NO.: GLKS-D01

额定速度：V=0.25~2.5m/s
总允许质量(P+Q): 1200~1400kg
导轨宽度：10、16mm
Rated Speed: V=0.25~2.5m/s
Allowable gross mass(P+Q): 1200~1400kg
Width of guide rails: 10、16mm



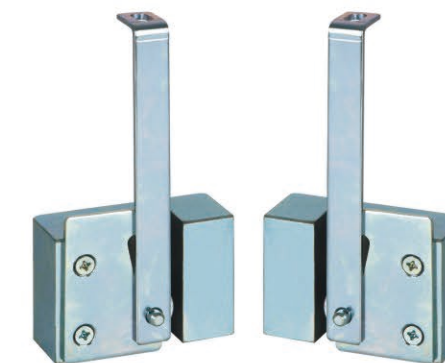
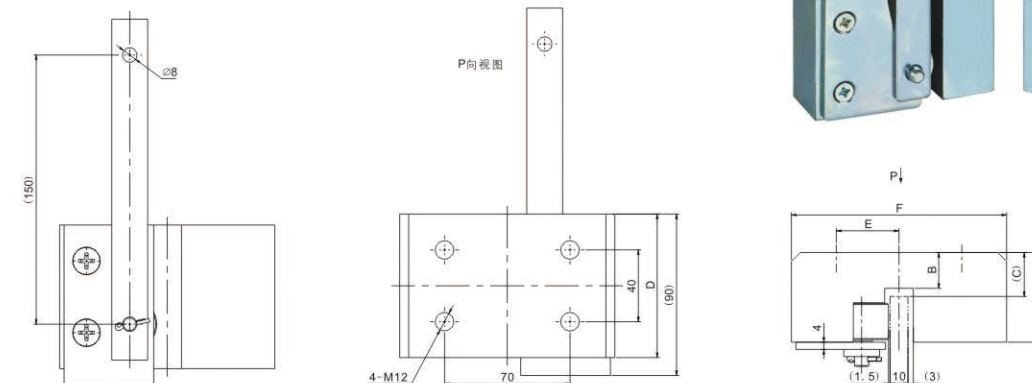
品名：瞬时式安全钳
识别号：GLKS-D01~03

NAME: Instantaneous Safety Gear
ITEM NO.: GLKS-D01~03

本装置为瞬时式安全钳，针对别墅电梯开发设计，结构简单小巧，采用立面安装，选用时需明确系统质量以及额定速度，只能匹配T75导轨。本装置一套两件，左右各一件。

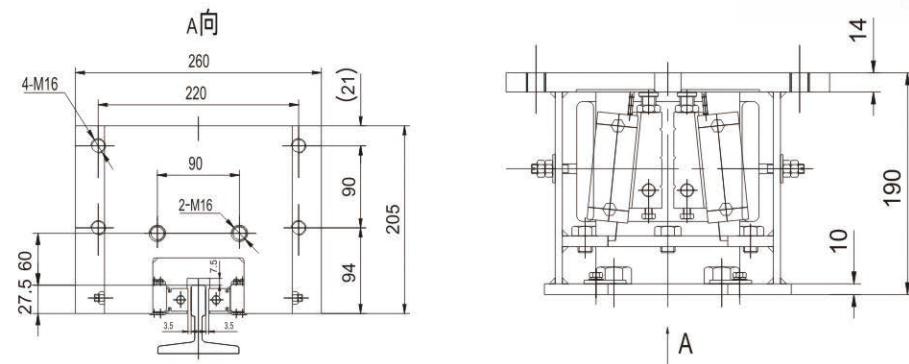
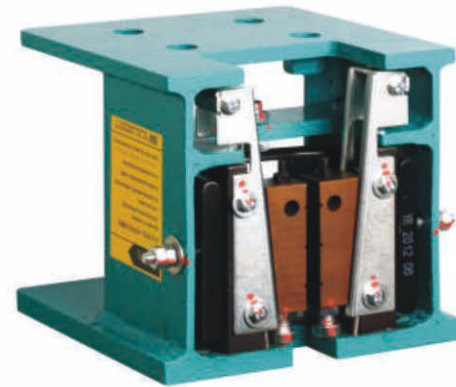
This device is intantaneous type safety clamp, in view of the villa elevator design, simple structure compact, the facade installation, choose need to clear the system quality and rated speed, can only match T75 guide rail.This device is a set of two, about each one.

规格型号 MODEL	A	B	C	D	E	F
D01	45	19	24	80	35	110
D02	40.5	15	20	70	21	100
D03	50	20	24	80	35	120



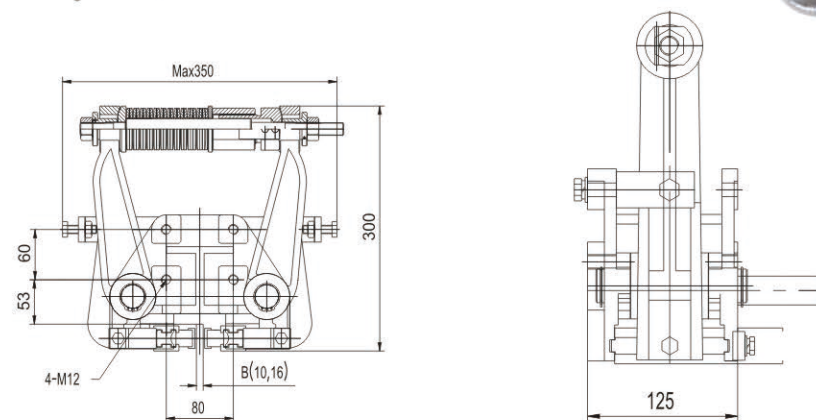
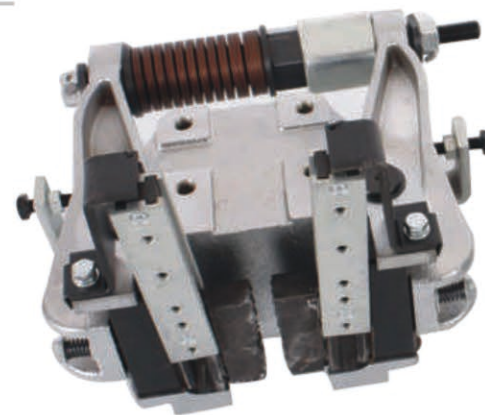
品名：渐进式安全钳
 识别号：GLKS-D03
 NAME: Progressive Safety Gear
 ITEM NO.: GLKS-D03

额定速度: $V=0.25\sim 2.5\text{m/s}$
 总允许质量 (P+Q): 1200~4500kg
 导轨宽度: 10、16mm
 Rated Speed: $V=0.25\sim 2.5\text{m/s}$
 Allowable gross mass(P+Q): 1200~4500kg
 Width of guide rails: 10、16mm

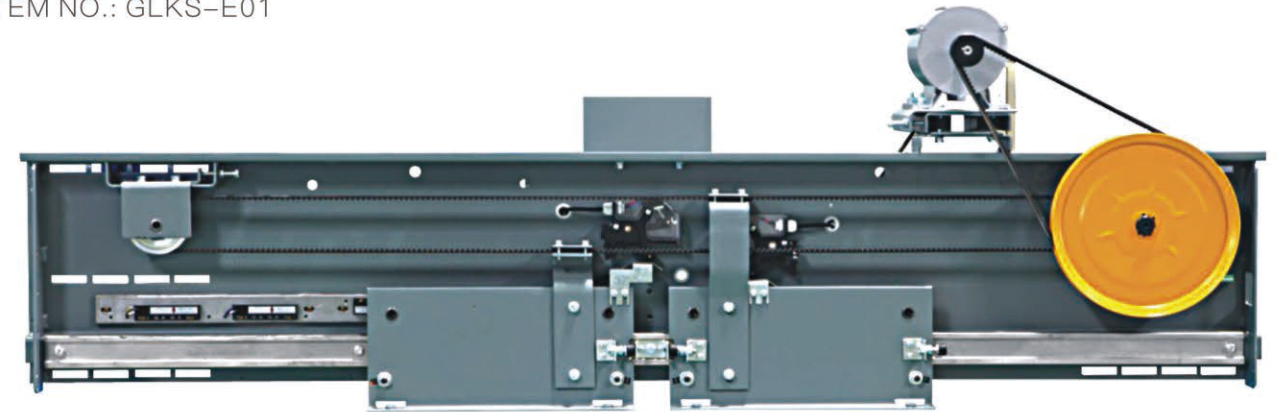


品名：安全钳
 识别号：GLKS-D04
 NAME: Safety Gear
 ITEM NO.: GLKS-D04

额定速度: $V=0.25\sim 2.5\text{m/s}$
 总允许质量 (P+Q): 2000~5000kg
 导轨宽度: 10、16mm
 Rated Speed: $V=0.25\sim 2.5\text{m/s}$
 Allowable gross mass(P+Q): 2000~5000kg
 Width of guide rails: 10、16mm



品名：中分变频门机
 识别号：GLKS-E01
 NAME: 2-Leafs Center Opening VVVF Door Operator
 ITEM NO.: GLKS-E01



JJ	700	750	800	850	900	950	1000	1050	1100	1200
A1	1460	1560	1660	1760	1860	1960	2060	2160	2260	2460
B1	225	250	275	300	325	350	375	400	425	475
AS	根据轿厢轿架的直梁内尺寸确定									
EE	根据轿厢深度的1/2确定									
Bb	根据要求确定									

品名：中分层门装置
 识别号：GLKS-E02
 NAME: 2-Leafs Center Opening Landing Door Device
 ITEM NO.: GLKS-E02



JJ	700	750	800	850	900	950	1000	1050	1100	1200
A1	1440	1540	1640	1740	1840	1940	2040	2140	2240	2440
B1	225	250	275	300	325	350	375	400	425	475

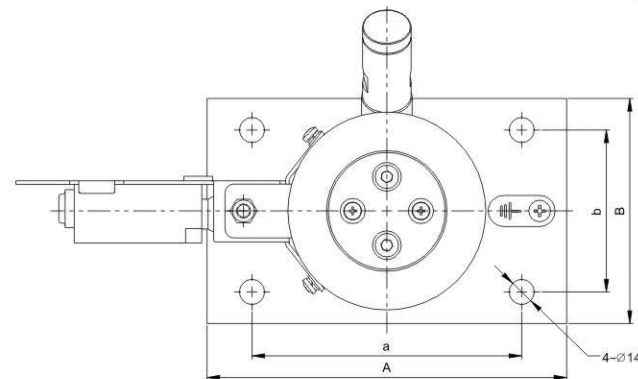
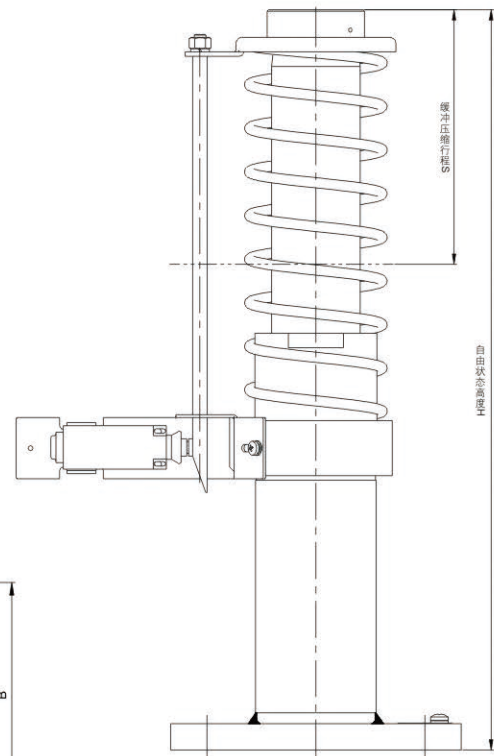
F 缓冲器系列 OIL BUFFER SERIES

品名: 液压缓冲器
 识别号: GLKS-F01/02/03
 NAME: Oil Buffer
 ITEM NO.: GLKS-F01/02/03

型号	压缩行程	自由状态高度	底板尺寸	安装尺寸
Type	S(mm)	H(mm)	B*A(mm)	b*a(mm)
GLKS-F01	80	315	125*200	90*150
GLKS-F02	175	510	125*200	90*150
GLKS-F03	210	600	125*200	90*150

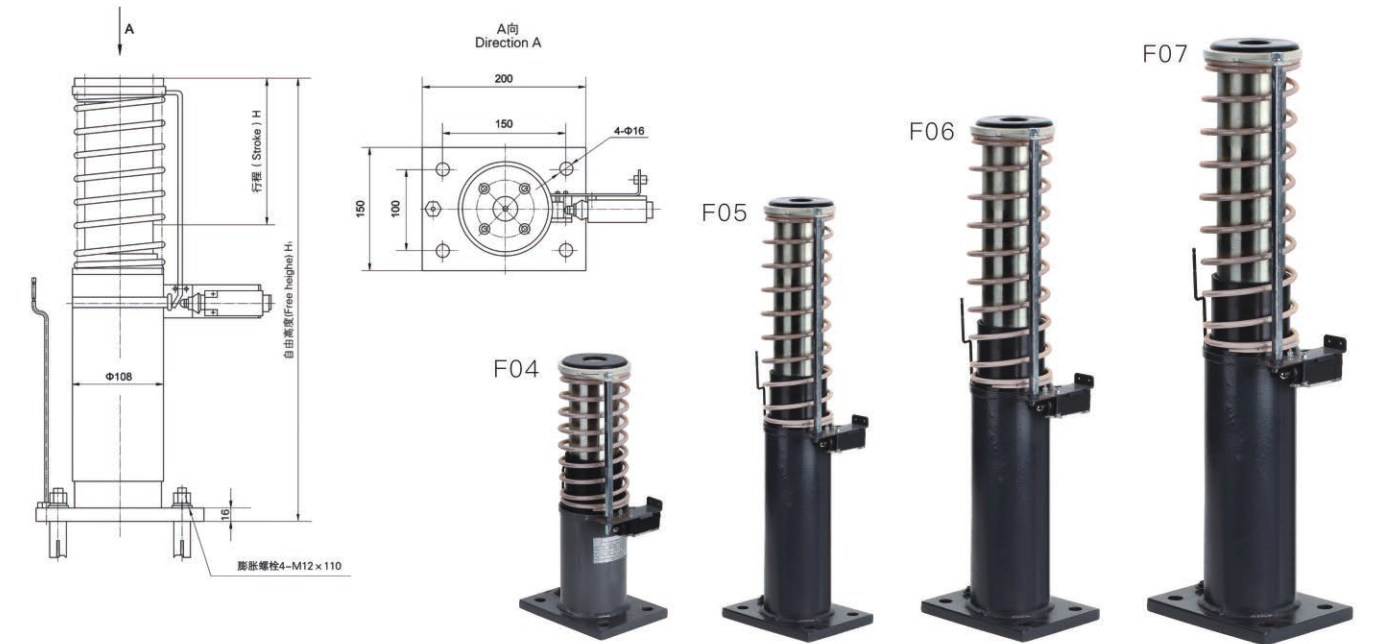
本缓冲器主要适用于轿厢或对重下方, 需正向安装使用, 其安全开关通过开关打杆实现动作, 可选手动复位或自动复位, 其位置状态需根据实际安装调整。

The buffer is mainly suitable for capsules or benbath the heavy, need to be used is installed, the safety switch through the switch lever to realize action, can choose to manually reset or automatic reset, and its position state according to the actual installation should be adjusted.



品名: 液压缓冲器
 识别号: GLKS-F04~07
 NAME: Oil Buffer
 ITEM NO.: GLKS-F04~07

型号	H行程(mm)	H1自由高度(mm)	额定速度V(m/s)	总容许质量(P+Q)1(kg)
Type	Stroke	Free height	Rated speed	Allowable gross mass
GLKS-F04	100	420	1	900-3000
GLKS-F05	175	580	1.6	900-3000
GLKS-F06	206	673	1.75	900-3000
GLKS-F07	275	810	2	900-3000



品名: 聚氨酯缓冲器
 识别号: GLKS-F08~19
 NAME: Polyurethane Buffer
 ITEM NO.: GLKS-F08~19

型号	规格	安装尺寸					最大缓冲行程(mm)	适用电梯额定速度	容许质量范围(P+Q)Kg
		DxH	B	b	h	h ₁			
GLKS-F08	80x96	108	80	6	14	105	≤0.63m/s	800-200	
GLKS-F09	100x160	128	96	6	14	116	≤1.0m/s	1900-500	
GLKS-F10	120x192	160	126	6	14	136	≤1.0m/s	2200-500	
GLKS-F11	130x205	160	126	6	14	146	≤1.0m/s	2820-500	
GLKS-F12	150x220	200	156	6	16	168	≤1.0m/s	4200-500	
GLKS-F13	140x300	200	156	6	16	236	≤1.0m/s	5500-500	
GLKS-F14	80x96	108	80	6	12	68	≤0.63m/s	1500-500	
GLKS-F15	100x120	128	96	6	14	86	≤0.63m/s	2800-500	
GLKS-F16	130x156	160	126	6	14	109	≤0.63m/s	4500-500	
GLKS-F17	160x200	200	156	6	16	150	≤0.63m/s	6000-1600	
GLKS-F18	200x200	246	196	6	16	156	≤0.63m/s	9680-500	
GLKS-F19	140x160	200	156	6	16	120	≤0.63m/s	5500-500	



品名: PB161客梯门锁
识别号: GLKS-G01
NAME: PB161
Passenger Door Lock
ITEM NO.: GLKS-G01



品名: PB152门锁
识别号: GLKS-G03
NAME: PB152 Door Lock
ITEM NO.: GLKS-G03



品名: 西子奥的斯(东芝)门锁
识别号: GLKS-G05
NAME: XIZI OTIS (TOSHIBA) Door Lock
ITEM NO.: GLKS-G05



品名: 上海现代门锁
识别号: GLKS-G07
NAME: Shanghai Hyundai Door Lock
ITEM NO.: GLKS-G07



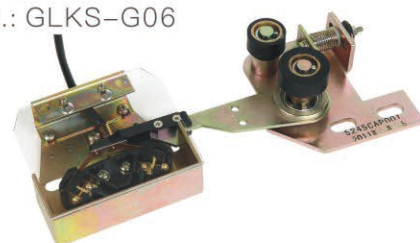
品名: 161A三菱货梯门锁
识别号: GLKS-G02
NAME: 161A
Mitsubishi Door Lock
ITEM NO.: GLKS-G02



品名: 广日门锁
识别号: GLKS-G04
NAME: Guangri Door Lock
ITEM NO.: GLKS-G04



品名: 三菱富士达门锁
识别号: GLKS-G06
NAME: Fujitec Door Lock
ITEM NO.: GLKS-G06



品名: LG星玛门锁
识别号: GLKS-G08
NAME: LG Sigma Door Lock
ITEM NO.: GLKS-G08



品名: 关门力限制器
识别号: GLKS-G09
NAME: Limiter
ITEM NO.: GLKS-G09



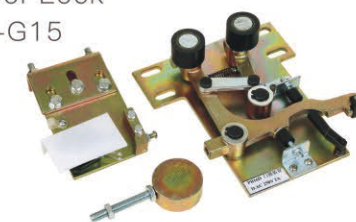
品名: 双钩161门锁
识别号: GLKS-G11
NAME: 161 Door Lock (Two hooks)
ITEM NO.: GLKS-G11



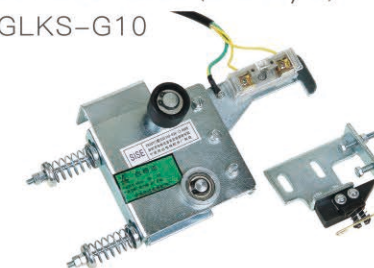
品名: 展鹏门锁
识别号: GLKS-G13
NAME: Door Lock
ITEM NO.: GLKS-G13



品名: PB16D门锁
识别号: GLKS-G15
NAME: PB160 Door Lock
ITEM NO.: GLKS-G15



品名: PB307门锁(老款)
识别号: GLKS-G10
NAME: PB307 Door Lock (Old style)
ITEM NO.: GLKS-G10



品名: PB307门锁(新款)
识别号: GLKS-G12
NAME: PB307 Door Lock (New style)
ITEM NO.: GLKS-G12



品名: 上海永大日立门锁
识别号: GLKS-G14
NAME: Shanghai Yungtay Door Lock
ITEM NO.: GLKS-G14



品名: 迅达V03门锁
识别号: GLKS-G16
NAME: Schindler V03 Door Lock
ITEM NO.: GLKS-G16



品名：三菱客梯导靴

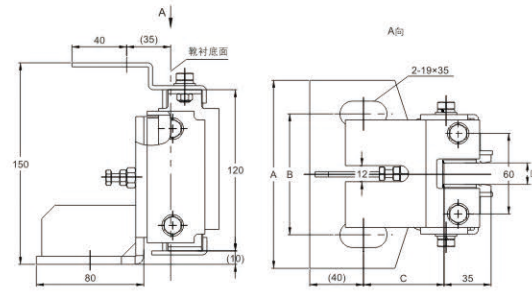
识别号：GLKS-H01

NAME: Mitsubishi Guide Shoe For Passenger Elevator
ITEM NO.: GLKS-H01

额定速度：≤1.75m/s
正压力：1050N
侧压力：650N
靴衬型号：GLKS-K01
匹配导轨：5;9;10;15.88;16
适用于轿厢侧
Rated Speed: ≤1.75m/s
Positive Force: 1050N
Yawing Force: 650N
Shoe Lining Type: GLKS-K01
Match The Guide Rail: 5;9;10;15.88;16
Applicable to the lateral capsules



规格分类号 STANDARD CLASSIFY	A	B	C	D
A01	140	90	60	9/10/16
A02	110	70	60	9/10/16

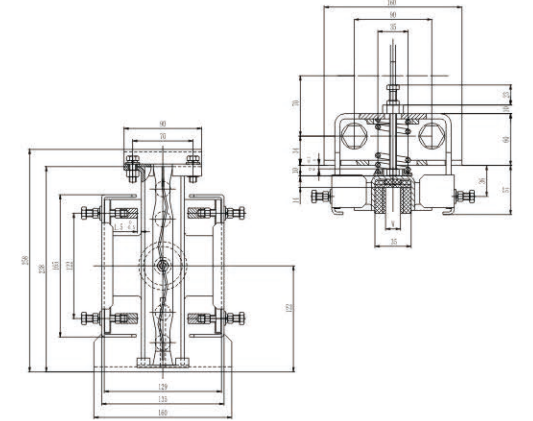


品名：申菱高速导靴

识别号：GLKS-H04

NAME: Shenling High Speed Guide Shoe
ITEM NO.: GLKS-H04

额定速度：≤1.75m/s
正压力：1050N
侧压力：650N
靴衬型号：
匹配导轨：10;15.88;16
适用于轿厢侧
Rated Speed: ≤1.75m/s
Positive Force: 1050N
Yawing Force: 650N
Shoe Lining Type: GLKS-K05
Match The Guide Rail: 10;15.88;16
Applicable to the lateral capsules



品名：三菱对重空心导靴

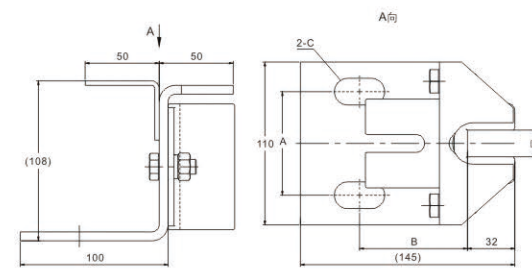
识别号：GLKS-H02

NAME: Mitsubishi Counter Weight Hollow Guide Shoe
ITEM NO.: GLKS-H02

额定速度：≤1.75m/s
靴衬型号：GLKS-K16
匹配导轨：10;16.4
适用于对重侧
Rated Speed: ≤1.75m/s
Shoe Lining Type: GLKS-K16
Match The Guide Rail: 10;16.4
Suitable for heavy side



规格分类号 STANDARD CLASSIFY	A	B	C	D
A01	70	73	18×35	10/16
A02	60	73	18×35	10/16
A03	70	73	25	10/16

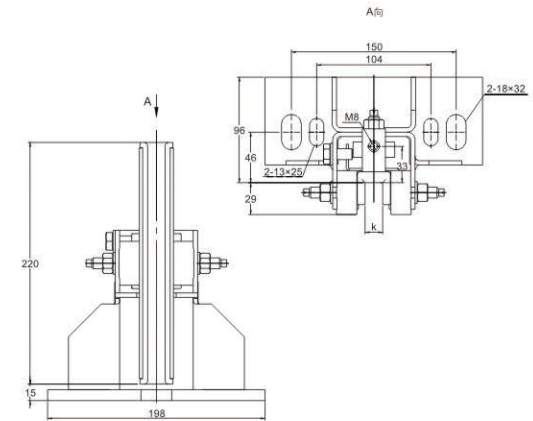


品名：B22导靴

识别号：GLKS-H05

NAME: B22 Guide Shoe
ITEM NO.: GLKS-H05

额定速度：≤1.75m/s
靴衬型号：GLKS-K06
匹配导轨：10; 16.4
适用于轿厢侧
Rated Speed: ≤1.75m/s
Shoe Lining Type: GLKS-K06
Match The Guide Rail: 10; 16.4
Applicable To The Lateral Capsules



品名：PB186高速导靴

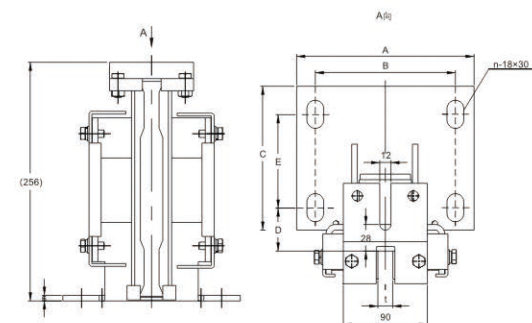
识别号：GLKS-H03

NAME: High Speed Guide Shoe
ITEM NO.: GLKS-H03

额定速度：≤2.5m/s
正压力：1450N
侧压力：850N
靴衬型号：GLKS-K05
匹配导轨：10;15.88;16
适用于轿厢侧
Rated Speed: ≤2.5m/s
Positive Force: 1450N
Yawing Force: 850N
Shoe Lining Type:
Match The Guide Rail:10;15.88;16
Applicable to the lateral capsules



规格分类号 STANDARD CLASSIFY	A	B	C	D	E	n	t
A01	190	150	155	45	100	4	10/16

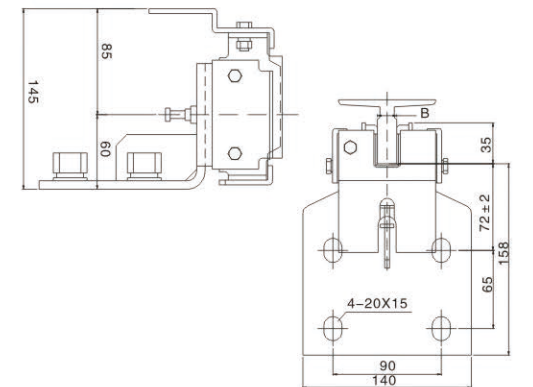
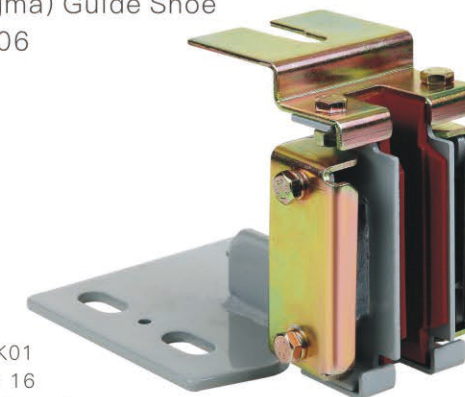


品名：广日(星玛)导靴

识别号：GLKS-H06

NAME: Guangri (Sigma) Guide Shoe
ITEM NO.: GLKS-H06

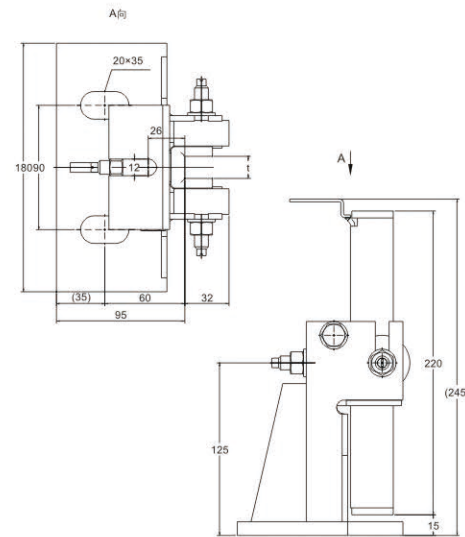
额定速度：≤1.75m/s
正压力：1450N
侧压力：850N
靴衬型号：GLKS-K01
匹配导轨：10; 16
适用于轿厢侧
Rated Speed: ≤1.75m/s
Positive Force: 1450N
Yawing Force: 850N
Shoe Lining Type: GLKS-K01
Match The Guide Rail: 10; 16
Applicable To The Lateral Capsules



品名: B22-1导靴
识别号: GLKS-H07

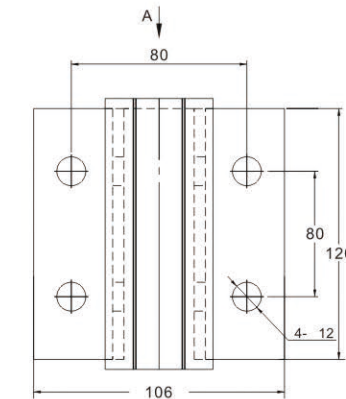
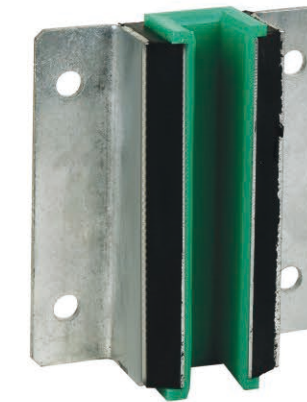
NAME: Guide Shoe
ITEM NO.: GLKS-H07

额定速度: $\leq 2.0\text{m/s}$
正压力: 1100N
侧压力: 700N
靴衬型号: GLKS-K06
匹配导轨: 10;15.88;16
适用于轿厢侧
Rated Speed: $\leq 2.0\text{m/s}$
Positive Force: 1100N
Yawing Force: 700N
Shoe Lining Type: GLKS-K06
Match The Guide Rail: 10;15.88;16
Applicable to the lateral capsules



品名: 通力对重导靴
识别号: GLKS-H10
NAME: KONE Counter
Weight Guide Shoe
ITEM NO.: GLKS-H10

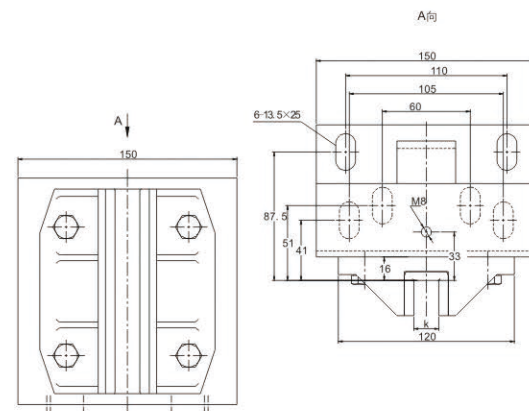
额定速度: $\leq 2.0\text{m/s}$
靴衬型号: GLKS-K09
匹配导轨: 10;16.4
适用于对重侧
Rated Speed: $\leq 2.0\text{m/s}$
Shoe Lining Type: GLKS-K09
Match The Guide Rail: 10;16.4
Suitable for heavy side



品名: L14导靴
识别号: GLKS-H08

NAME: Guide Shoe
ITEM NO.: GLKS-H08

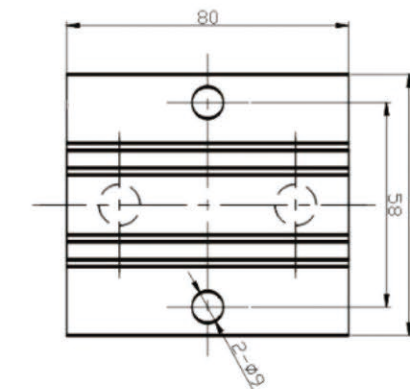
额定速度: $\leq 2.0\text{m/s}$
靴衬型号: GLKS-K13
匹配导轨: 9;10;15.88;16.4
适用于对重侧
Rated speed: $\leq 2.0\text{m/s}$
Shoe lining type: GLKS-K13
Match the guide rail: 9;10;15.88;16.4
Suitable for heavy side



品名: 通力(星玛)导靴
识别号: GLKS-H11

NAME: KONE(Sigma) Guide Shoe
ITEM NO.: GLKS-H11

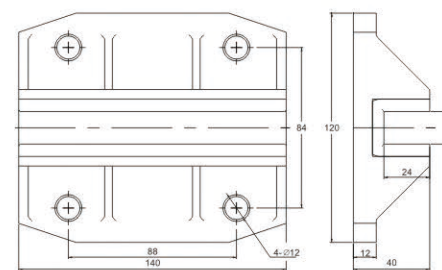
额定速度: $\leq 1.75\text{m/s}$
靴衬型号: GLKS-K19
匹配导轨: 10; 16.4
适用于对重侧
Rated Speed: $\leq 1.75\text{m/s}$
Shoe Lining Type: GLKS-K19
Match The Guide Rail: 10; 16.4
Suitable for heavy side



品名: 蒂森对重导靴
识别号: GLKS-H09

NAME: Thyssen Counter
Weight Guide Shoe
ITEM NO.: GLKS-H09

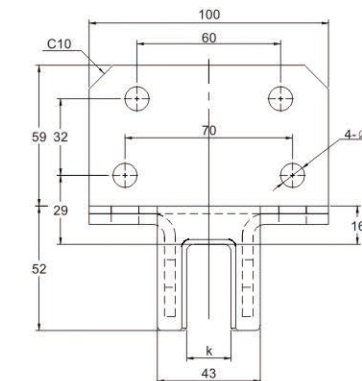
额定速度: $\leq 2.0\text{m/s}$
靴衬型号: GLKS-K13
匹配导轨: 10;15.88;16.4
适用于对重侧
Rated Speed: $\leq 2.0\text{m/s}$
Shoe Lining Type: GLKS-K13
Match The Guide Rail: 10;15.88;16.4
Suitable for heavy side



品名: 广日对重导靴
识别号: GLKS-H12

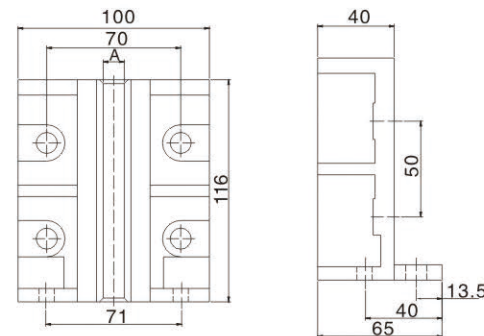
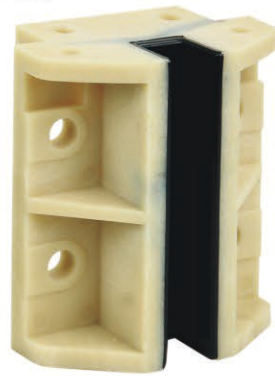
NAME: GUANGRI Counter
Weight Guide Shoe
ITEM NO.: GLKS-H12

额定速度: $\leq 1.75\text{m/s}$
匹配导轨: 10;16.4
适用于对重侧
Rated Speed: $\leq 1.75\text{m/s}$
Match The Guide Rail: 10; 16.4
Suitable for heavy side



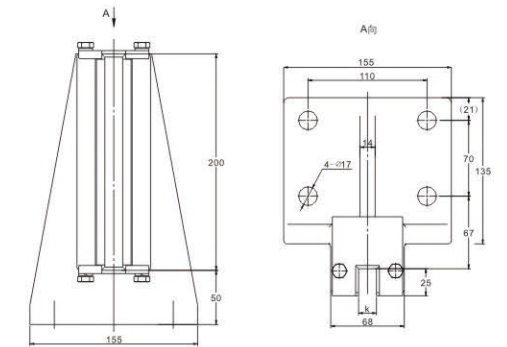
品名：广日塑料导靴
 识别号：GLKS-H13
 NAME: Guangri Guide Shoe (Plastic)
 ITEM NO.: GLKS-H13

额定速度：≤1.75m/s
 匹配导轨：10；16
 适用于对重侧
 Rated Speed: ≤1.75m/s
 Match The Guide Rail: 10；16
 Suitable for heavy side



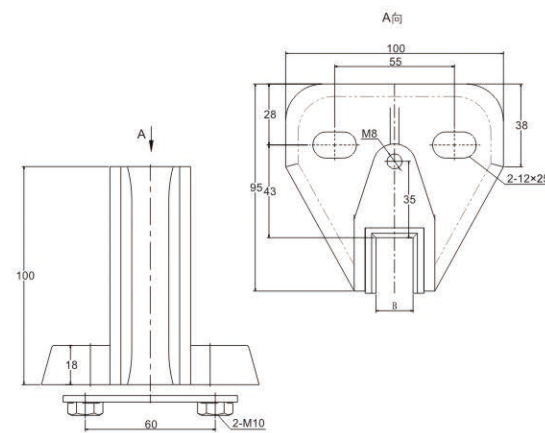
品名：货梯导靴
 识别号：GLKS-H16
 NAME: Goods Elevator Guide Shoe
 ITEM NO.: GLKS-H16

额定速度：≤1.75m/s
 靴衬型号：GLKS-K07
 匹配导轨：10；16
 适用于轿厢侧
 Rated Speed: ≤1.75m/s
 Shoe Lining Type: GLKS-K07
 Match The Guide Rail: 10；16
 Applicable To The Lateral Capsules



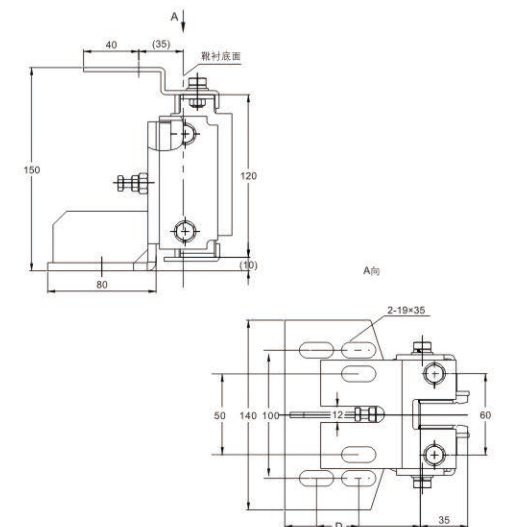
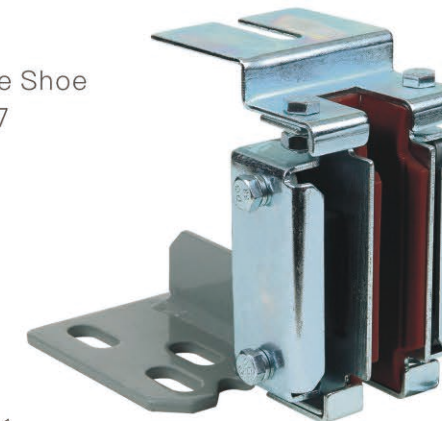
品名：L10导靴
 识别号：GLKS-H14
 NAME: L10 Guide Shoe
 ITEM NO.: GLKS-H14

额定速度：≤1.75m/s
 靴衬型号：GLKS-K02
 匹配导轨：5；10；16.4
 适用于对重侧
 Rated Speed: ≤1.75m/s
 Shoe Lining Type: GLKS-K02
 Match The Guide Rail: 5；10；16.4
 Suitable for heavy side



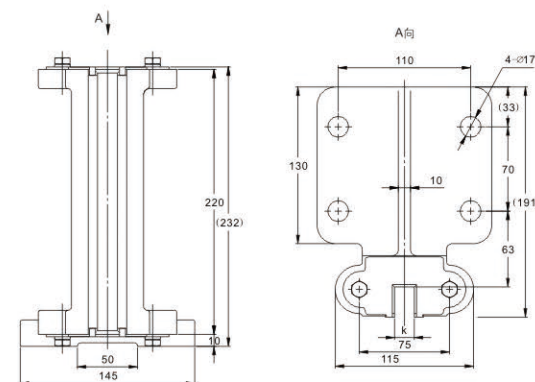
品名：蒂森导靴
 识别号：GLKS-H17
 NAME: Thyssen Guide Shoe
 ITEM NO.: GLKS-H17

额定速度：≤1.75m/s
 正压力：1050N
 侧压力：650N
 靴衬型号：GLKS-K01
 匹配导轨：5;9;10;15.88;16
 适用于轿厢侧
 Rated Speed: ≤1.75m/s
 Positive Force: 1050N
 Yawing Force: 650N
 Shoe Lining Type: GLKS-K01
 Match The Guide Rail: 5;9;10;15.88;16
 Applicable to the lateral capsules



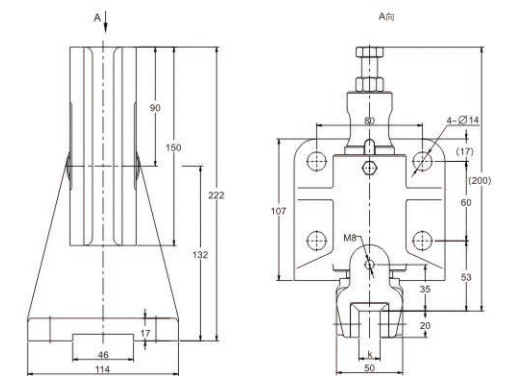
品名：货梯导靴
 识别号：GLKS-H15
 NAME: Goods Elevator Guide Shoe
 ITEM NO.: GLKS-H15

额定速度：≤1.75m/s
 靴衬型号：GLKS-K07
 匹配导轨：10；16
 适用于轿厢侧
 Rated Speed: ≤1.75m/s
 Shoe Lining Type: GLKS-K07
 Match The Guide Rail: 10；16
 Applicable To The Lateral Capsules



品名：T15导靴
 识别号：GLKS-H18
 NAME: T15 Guide Shoe
 ITEM NO.: GLKS-H18

额定速度：≤2.0m/s
 靴衬型号：GLKS-K12
 匹配导轨：10；16
 适用于轿厢侧
 Rated Speed: ≤2.0m/s
 Shoe Lining Type: GLKS-K12
 Match The Guide Rail: 10；16
 Applicable To The Lateral Capsules

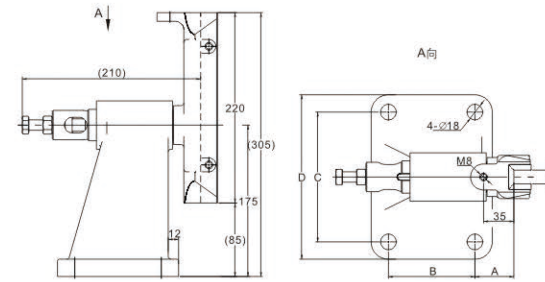


品名: T22导靴
 识别号: GLKS-H19
 NAME: T22 Guide Shoe
 ITEM NO.: GLKS-H19

额定速度: ≤2.0m/s
 靴寸型号: GLKS-K11
 匹配导轨: 10; 16
 适用于轿厢侧
 Rated Speed: ≤2.0m/s
 Shoe Lining Type: GLKS-K11
 Match The Guide Rail: 10; 16
 Applicable To The Lateral Capsules

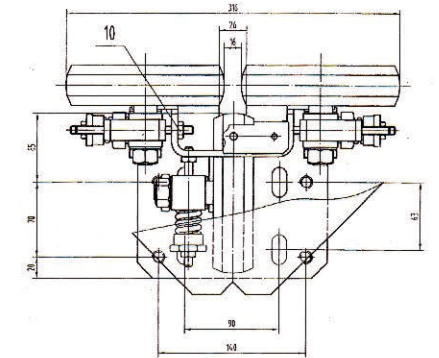


规格分类号 STANDARD CLASSIFY	A	B	C	D	导轨规格 (mm)
A01	65	70	110	190	16
A02	65	70	110	190	10
A03	45	100	150	190	16
A04	45	100	150	190	10



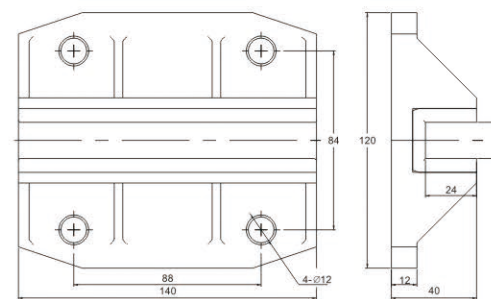
品名: 通力滚轮主导靴
 识别号: GLKS-H22
 NAME: KONE Main Roller Guide Shoe
 ITEM NO.: GLKS-H22

额定速度: ≤5.0m/s
 匹配导轨: 5-25
 适用于轿厢侧
 Rated speed: ≤5.0m/s
 Match the guide rail: 5-25
 Applicable To The Lateral Capsules



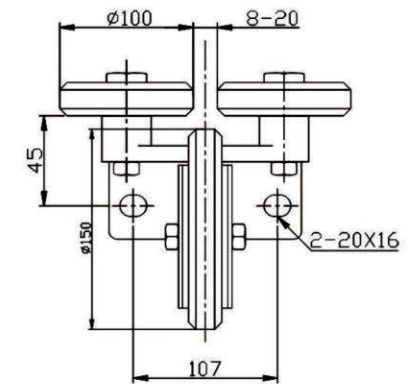
品名: 蒂森对重导靴
 识别号: GLKS-H20
 NAME: THYSSEN Counter Weight Guide Shoe
 ITEM NO.: GLKS-H20

额定速度: ≤2.0m/s
 靴衬型号: GLKS-K13
 匹配导轨: 9;10;15.88;16.4
 适用于对重侧
 Rated Speed: ≤2.0m/s
 Shoe Lining Type: GLKS-K13
 Match The Guide Rail: 9;10;15.88;16.4
 Suitable for heavy side



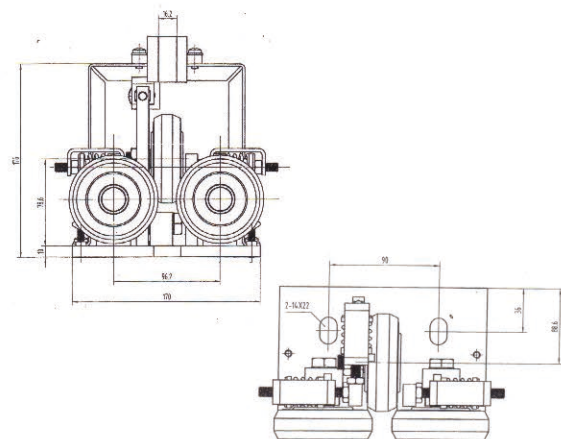
品名: R3滚轮导靴
 识别号: GLKS-H23
 NAME: R3 Roller Guide Shoe
 ITEM NO.: GLKS-H23

额定速度: ≤5.0m/s
 匹配导轨: 5-25
 适用于对重侧
 Rated speed: ≤5.0m/s
 Match the guide rail: 5-25
 Suitable for heavy side



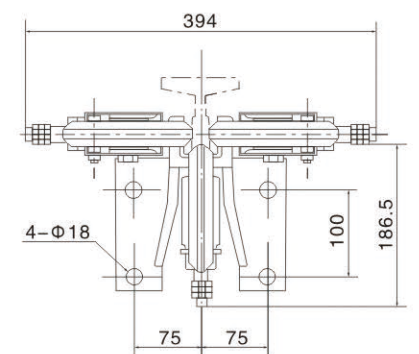
品名: 通力对重滚轮导靴
 识别号: GLKS-H21
 NAME: KONE Counter Weight Roller Guide Shoe
 ITEM NO.: GLKS-H21

额定速度: ≤5.0m/s
 匹配导轨: 5-25
 适用于对重侧
 Rated Speed: ≤5.0m/s
 Match The Guide Rail: 5-25
 Suitable for heavy side



品名: R6滚轮导靴
 识别号: GLKS-H24
 NAME: R6 Roller Guide Shoe
 ITEM NO.: GLKS-H24

额定速度: ≤5.0m/s
 匹配导轨: 5-25
 适用于轿厢侧
 Rated speed: ≤5.0m/s
 Match the guide rail: 5-25
 Applicable To The Lateral Capsules

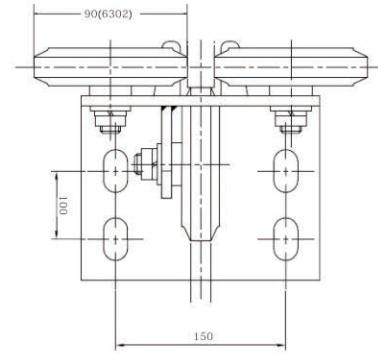
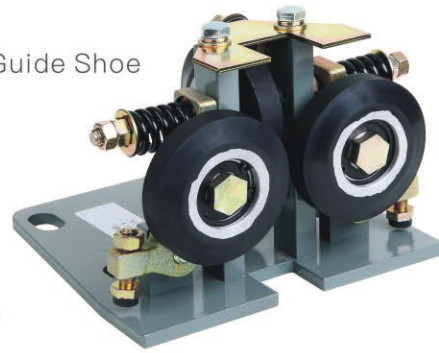


品名：沃克斯90滚轮导靴
识别号：GLKS-H25

NAME: Volkslift 90 Roller Guide Shoe
ITEM NO.: GLKS-H25

额定速度：≤5.0m/s
匹配导轨：8-20
适用于轿厢侧

Rated speed: ≤5.0m/s
Match the guide rail: 8-20
Applicable To The Lateral Capsules

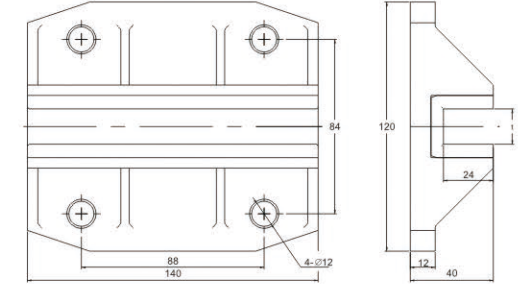


品名：通力对重导靴
识别号：GLKS-H28

NAME: Kone Counter Weight Guide Shoe
ITEM NO.: GLKS-H28

额定速度：≤2.0m/s
靴衬型号：GLKS-K10
匹配导轨：9;10; 16
适用于对重侧

Rated speed: ≤2.0m/s
Shoe Lining Type: GLKS-K10
Match the guide rail: 9; 10; 16
Suitable for heavy side

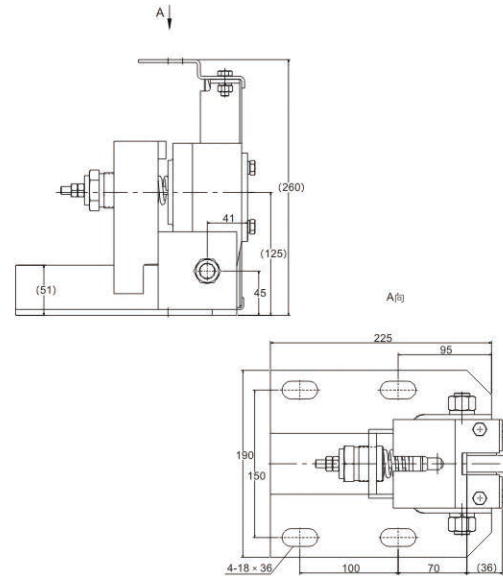


品名：三菱高速导靴
识别号：GLKS-H26
备注：100*150/100*130

NAME: Mitsubishi High Speed Guide Shoe
ITEM NO.: GLKS-H26
REMARKS: 100*150/100*130

额定速度：≤2.5m/s
正压力：1450N
侧压力：850N
靴衬型号：GLKS-K03
匹配导轨：10; 16
适用于轿厢侧

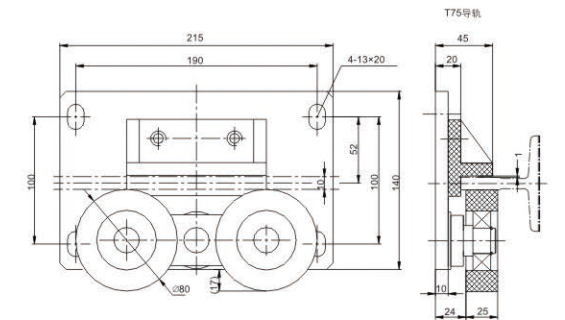
Rated Speed: ≤2.5m/s
Positive Force: 1450N
Yawing Force: 850N
Shoe Lining Type: GLKS-K03
Match The Guide Rail: 10; 16
Applicable To The Lateral Capsules



品名：别墅梯导靴
识别号：GLKS-H29
NAME: Guide Shoe For Villa Elevator
ITEM NO.: GLKS-H29

额定速度：≤0.63m/s
匹配导轨：10
适用于别墅梯

Rated speed: ≤0.63m/s
Match the guide rail: 10
Suitable For Villa Ladder

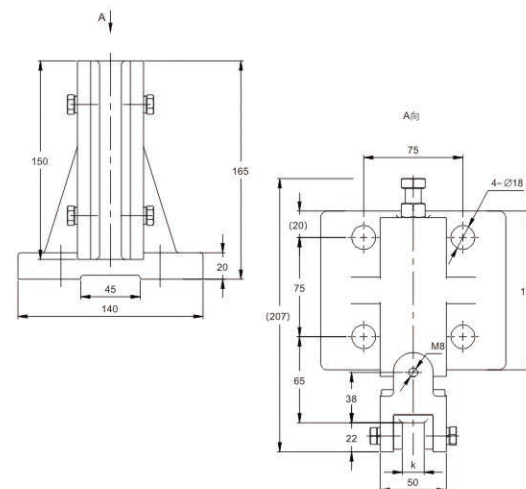


品名：货梯导靴
识别号：GLKS-H27

NAME: Guide Shoe For Goods Elevator
ITEM NO.: GLKS-H27

额定速度：≤1.75m/s
靴衬型号：GLKS-K12
匹配导轨：10; 16
适用于轿厢侧

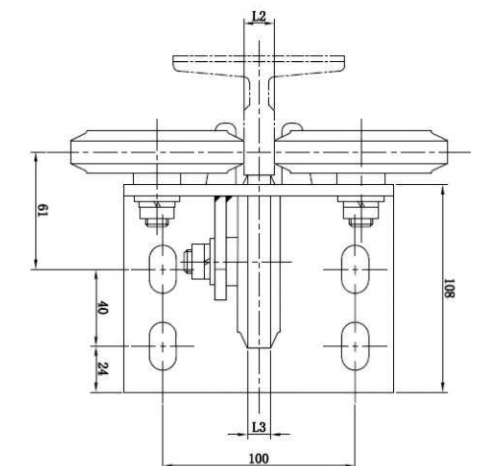
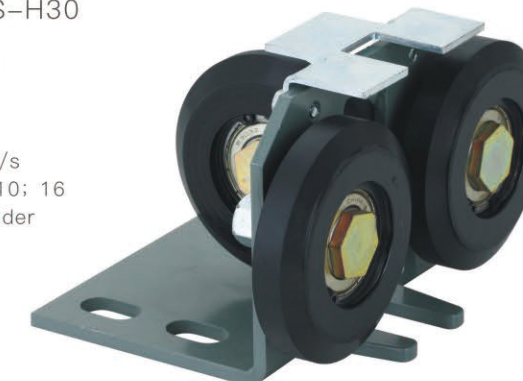
Rated Speed: ≤1.75m/s
Shoe Lining Type: GLKS-K12
Match The Guide Rail: 10; 16
Applicable To The Lateral Capsules



品名：别墅梯导靴
识别号：GLKS-H30
NAME: Guide shoe for villa elevator
ITEM NO.: GLKS-H30

额定速度：≤0.63m/s
匹配导轨：10; 16
适用于别墅梯

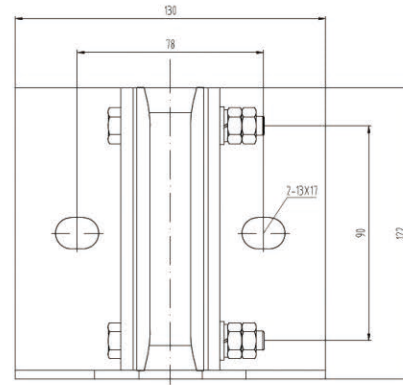
Rated speed: ≤0.63m/s
Match the guide rail: 10; 16
Suitable For Villa Ladder



品名：对重导靴
识别号：GLKS-H31

NAME: Counter Weight Guide Shoe
ITEM NO.: GLKS-H31

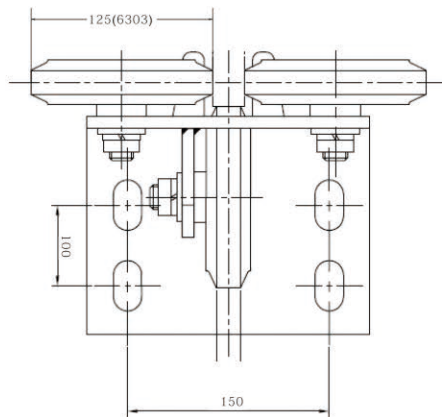
额定速度：≤1.75m/s
匹配导轨：10；16
适用于轿厢侧
Rated speed:≤1.75m/s
Match the guide rail:10；16
Applicable To The Lateral Capsules



品名：沃克斯125滚轮导靴
识别号：GLKS-H32

NAME: Volks 125 Roller Guide Shoe
ITEM NO.: GLKS-H32

额定速度：≤5.0m/s
匹配导轨：8-20
适用于轿厢侧
Rated speed:≤5.0m/s
Match the guide rail:8-20
Applicable To The Lateral Capsules



品名：餐梯导靴
识别号：GLKS-H33
NAME: Guide Shoe For Dining Elevator
ITEM NO.: GLKS-H33

额定速度：≤1.0m/s
匹配导轨：5；10；16
适用于轿厢侧
Rated speed:≤1.0m/s
Match the guide rail:5；10；16
Applicable To The Lateral Capsules



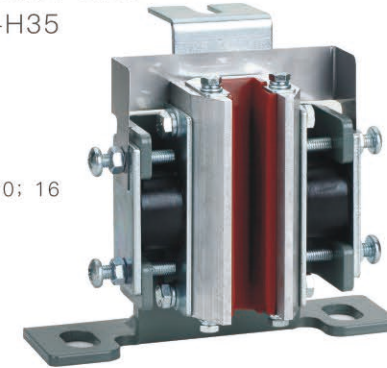
品名：蒂森对重导靴
识别号：GLKS-H34
NAME: Thyssen Counter Weight Guide Shoe
ITEM NO.: GLKS-H34

额定速度：≤1.75m/s
匹配导轨：5；10；16
适用于对重侧
Rated speed:≤1.75m/s
Match the guide rail:5；10；16
Suitable for heavy side



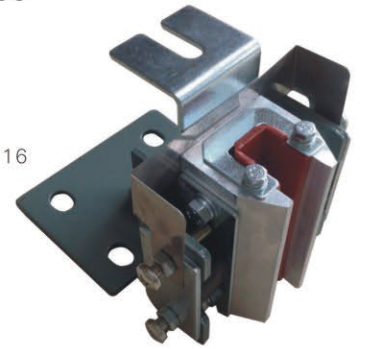
品名：日立导靴
识别号：GLKS-H35
NAME: HITACHI Guide Shoe
ITEM NO.: GLKS-H35

额定速度：≤2.0m/s
匹配导轨：10；16
适用于轿厢侧
Rated Speed:≤2.0m/s
Match The Guide Rail:10；16
Applicable To The Lateral Capsules



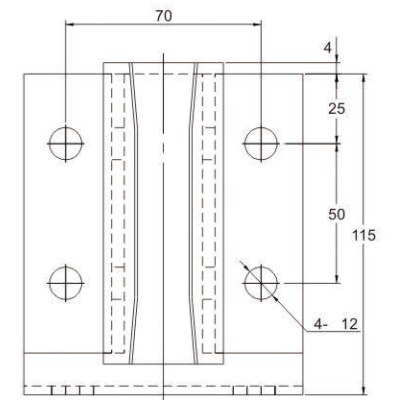
品名：日立导靴
识别号：GLKS-H36
NAME: HITACHI Guide Shoe
ITEM NO.: GLKS-H36

额定速度：≤2.0m/s
匹配导轨：10；16
适用于轿厢侧
Rated Speed:≤2.0m/s
Match The Guide Rail:10；16
Applicable To The Lateral Capsules



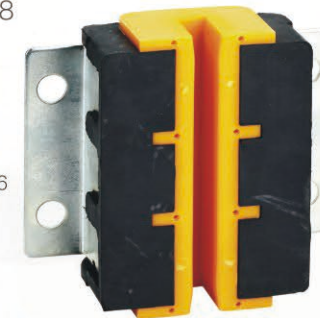
品名：广日对重导靴
识别号：GLKS-H37
NAME: GUANGRI Counter Weight Guide Shoe
ITEM NO.: GLKS-H37

额定速度：≤1.75m/s
匹配导轨：10；16
适用于轿厢侧
Rated Speed:≤1.75m/s
Match The Guide Rail:10；16
Applicable To The Lateral Capsules



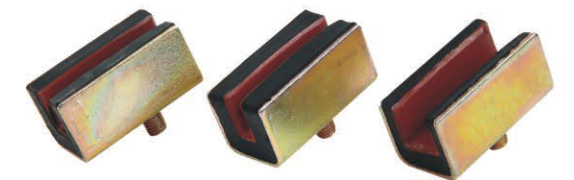
品名：蒂森滑动导靴
识别号：GLKS-H38
NAME: Thyssen Guide Shoe
ITEM NO.: GLKS-H38

额定速度：≤1.75m/s
匹配导轨：10；16
适用于轿厢侧
Rated Speed:≤1.75m/s
Match The Guide Rail:10；16
Applicable To The Lateral Capsules



品名：L7导靴
识别号：GLKS-H39
NAME: L7 Guide Shoe
ITEM NO.: GLKS-H39

额定速度：≤1.75m/s
匹配导轨：5；10；16
适用于对重侧
Rated speed:≤1.75m/s
Match the guide rail:5；10；16
Suitable for heavy side



品名：圆油壶（毛毡）
 识别号：GLKS-I01
 NAME: Oil Can
 ITEM NO.: GLKS-I01



品名：三菱大方油壶
 识别号：GLKS-I02
 NAME: Mitsubishi Oil Can
 ITEM NO.: GLKS-I02



品名：苏迅油壶
 识别号：GLKS-I07
 NAME: Oil Can
 ITEM NO.: GLKS-I07



品名：方集油壶
 识别号：GLKS-I08
 NAME: Oil Can
 ITEM NO.: GLKS-I08



品名：东芝大方油壶
 识别号：GLKS-I03
 NAME: TOSHIBA OIL CAN
 ITEM NO.: GLKS-I03



品名：广日方油壶
 识别号：GLKS-I04
 NAME: GuangRi Oil Can
 ITEM NO.: GLKS-I04



品名：圆集油壶
 识别号：GLKS-I09
 NAME: Oil Collector
 ITEM NO.: GLKS-I09



品名：圆油壶（绵线）
 识别号：GLKS-I10
 NAME: Oil Can
 ITEM NO.: GLKS-I10



品名：小方油壶
 识别号：GLKS-I05
 NAME: OIL CAN
 ITEM NO.: GLKS-I05



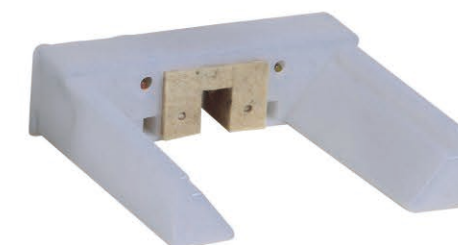
品名：通力油壶
 识别号：GLKS-I06
 NAME: Kone Oil Can
 ITEM NO.: GLKS-I06



品名：帝森油壶
 识别号：GLKS-I11
 NAME: Thyssen Oil Can
 ITEM NO.: GLKS-I11

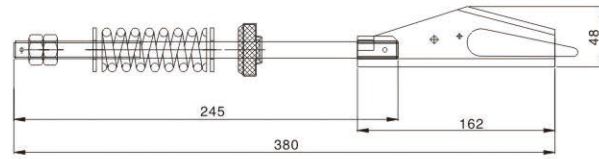
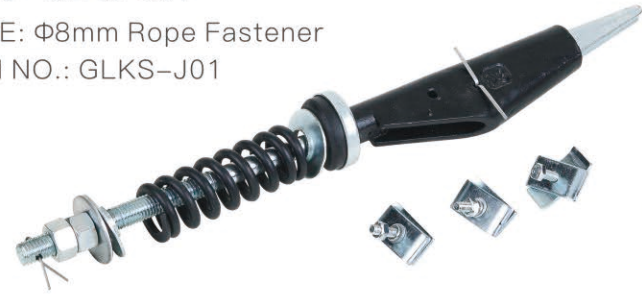


品名：帝森对重油壶
 识别号：GLKS-I12
 NAME: Thyssen CW Oil Can
 ITEM NO.: GLKS-I12

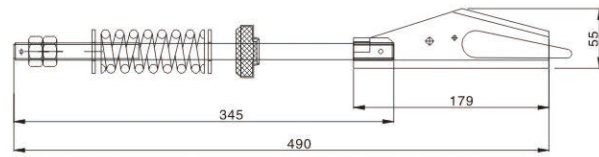


绳头系列 ROPE HEAD SERIES

品名：Φ8绳头组合
 识别号：GLKS-J01
 NAME: Φ8mm Rope Fastener
 ITEM NO.: GLKS-J01



品名：Φ10绳头组合
 识别号：GLKS-J02
 NAME: Φ10mm Rope Fastener
 ITEM NO.: GLKS-J02



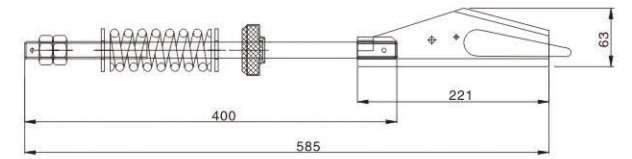
品名：11绳头组合
 识别号：GLKS-J03
 NAME: Φ11mm Rope Fastener
 ITEM NO.: GLKS-J03



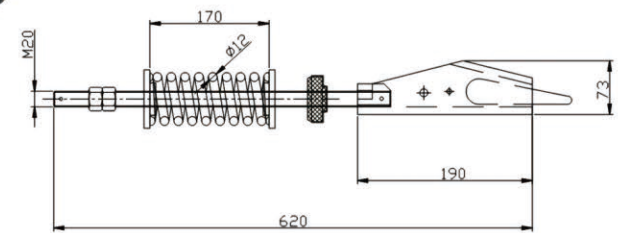
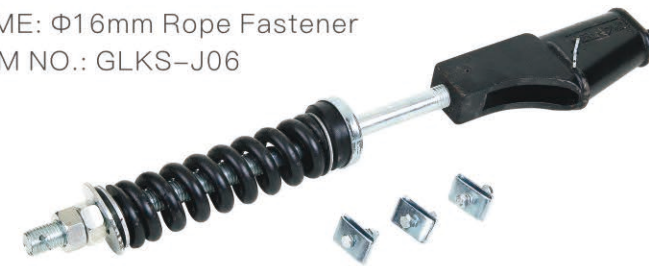
品名：12绳头组合
 识别号：GLKS-J04
 NAME: Φ12mm Rope Fastener
 ITEM NO.: GLKS-J04



品名：Φ13绳头组合
 识别号：GLKS-J05
 NAME: Φ13mm Rope Fastener
 ITEM NO.: GLKS-J05



品名：16绳头组合
 识别号：GLKS-J06
 NAME: Φ16mm Rope Fastener
 ITEM NO.: GLKS-J06



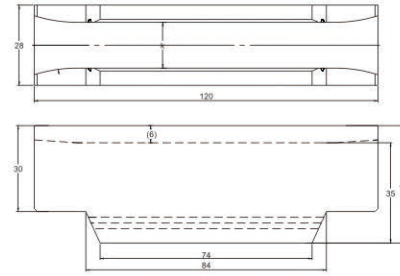
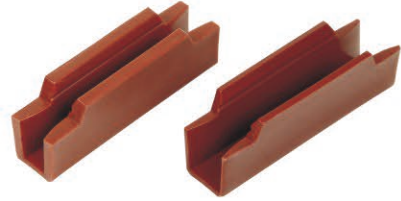
品名：活动式绳头组合
 识别号：GLKS-J07
 NAME: Movable Rope Fastener
 ITEM NO.: GLKS-J07



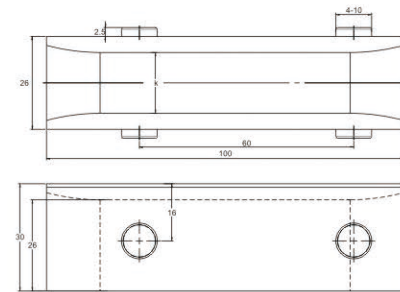
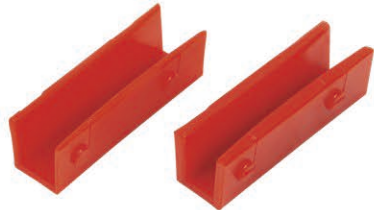
品名：钢丝绳锁扣
 识别号：GLKS-J08
 NAME: Wire Rope Lock
 ITEM NO.: GLKS-J04



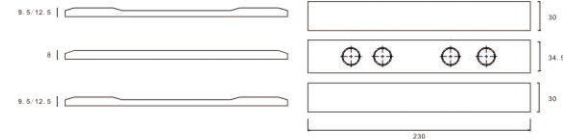
品名: 三菱靴寸
 识别号: GLKS-K01
 规格: 120*(5/9/10/16)
 NAME: Mitsubishi
 Guide Shoe Lining
 ITEM NO.: GLKS-K01
 SPECIFICATION: 120*(5/9/10/16)



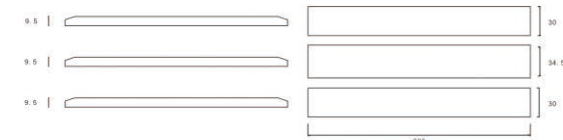
品名: L10靴寸
 识别号: GLKS-K02
 规格: 100*(5/10/16)
 NAME: Mitsubishi L10
 Guide Shoe Lining
 ITEM NO.: GLKS-K02
 SPECIFICATION: 100*(5/10/16)



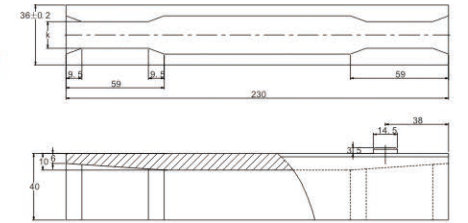
品名: 三菱三合一靴寸
 识别号: GLKS-K03
 规格: 230*(10/16)
 NAME: Mitsubishi
 Guide Shoe Lining
 ITEM NO.: GLKS-K03
 SPECIFICATION: 230*(10/16)



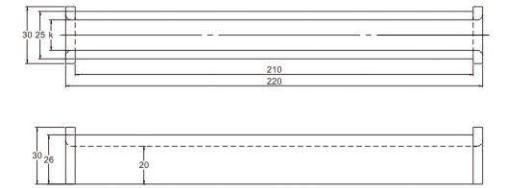
品名: 三菱平板三合一靴寸
 识别号: GLKS-K04
 规格: 230*16
 NAME: Mitsubishi
 Guide Shoe Lining
 ITEM NO.: GLKS-K04
 SPECIFICATION: 230*16



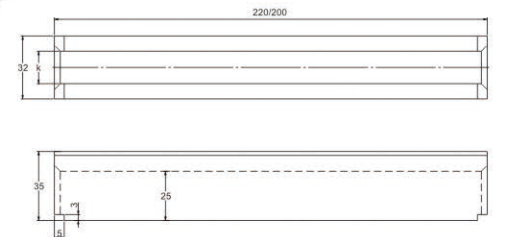
品名: 三菱连体型靴寸
 识别号: GLKS-K05
 规格: 230*(10/16)
 NAME: Mitsubishi
 Guide Shoe Lining
 ITEM NO.: GLKS-K05
 SPECIFICATION: 230*(10/16)



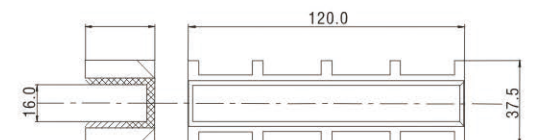
品名: B22靴寸
 识别号: GLKS-K06
 规格: 220*(10/16)
 NAME: B22
 Guide Shoe Lining
 ITEM NO.: GLKS-K06
 SPECIFICATION: 220*(10/16)



品名: 200货梯靴寸
 识别号: GLKS-K07
 规格: 200*(10/16);
 220*(10/16)
 NAME: 200 Goods Elevator
 Guide Shoe Lining
 ITEM NO.: GLKS-K07
 SPECIFICATION: 200*(10/16);
 220*(10/16)

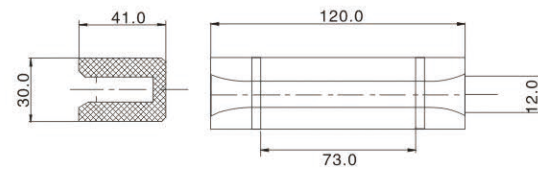
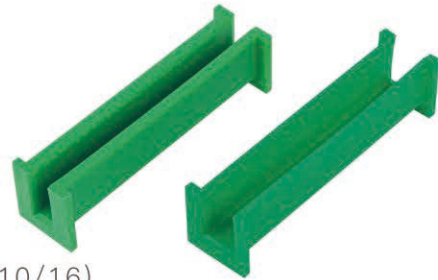


品名: 通力A型靴寸
 识别号: GLKS-K08
 规格: 120*(10/16)
 NAME: Kone A
 Guide Shoe Lining
 ITEM NO.: GLKS-K08
 SPECIFICATION: 120*(10/16)



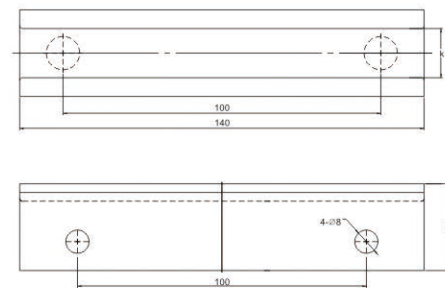
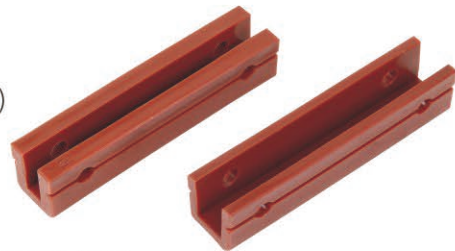
品名: 通力B型靴寸
 识别号: GLKS-K09
 规格: 120*(10/16)

NAME: Kone B
 Guide Shoe Lining
 ITEM NO.: GLKS-K09
 SPECIFICATION: 120*(10/16)



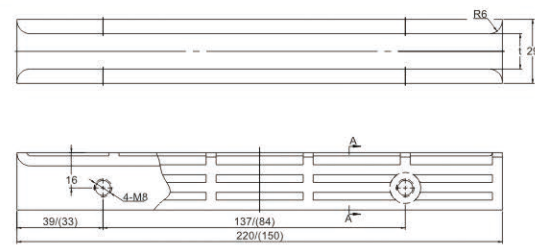
品名: 通力靴寸
 识别号: GLKS-K10
 规格: 140*(9/10/16)

NAME: Kone
 Guide Shoe Lining
 ITEM NO.: GLKS-K10
 SPECIFICATION: 140*(9/10/16)



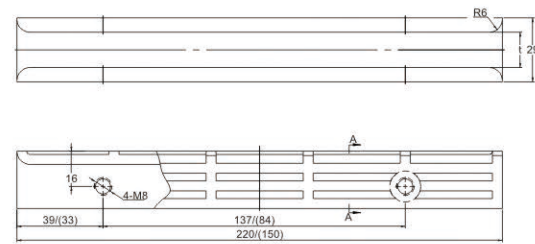
品名: T22靴寸
 识别号: GLKS-K11
 规格: 220*(10/16)

NAME: T22
 Guide Shoe Lining
 ITEM NO.: GLKS-K11
 SPECIFICATION: 220*(10/16)



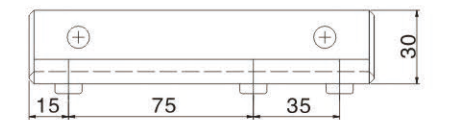
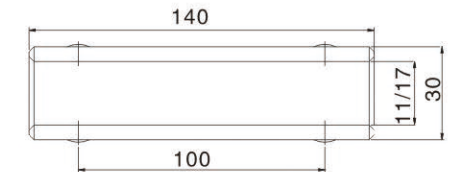
品名: T15靴寸
 识别号: GLKS-K12
 规格: 150*(10/16)

NAME: T15
 Guide Shoe Lining
 ITEM NO.: GLKS-K12
 SPECIFICATION: 150*(10/16)



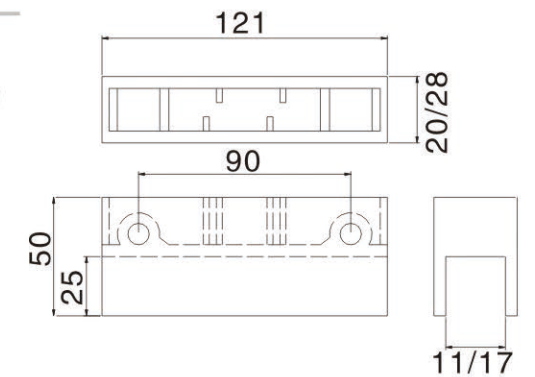
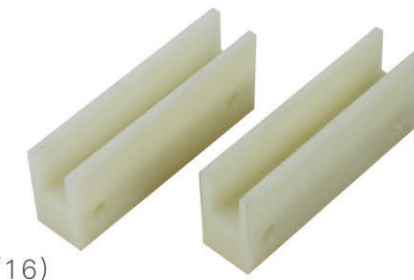
品名: L14靴寸
 识别号: GLKS-K13
 规格: 140*(10/16)

NAME: L14
 Guide Shoe Lining
 ITEM NO.: GLKS-K13
 SPECIFICATION: 140*(10/16)



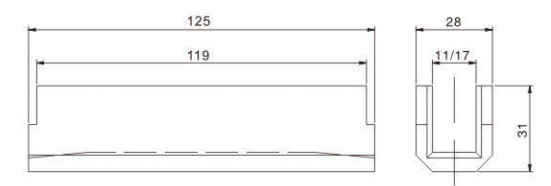
品名: OTIS靴寸
 识别号: GLKS-K14
 规格: 121*(10/16)

NAME: OTIS
 Guide Shoe Lining
 ITEM NO.: GLKS-K14
 SPECIFICATION: 121*(10/16)



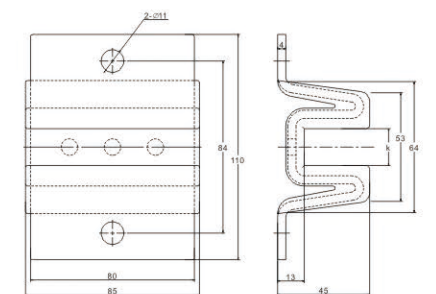
品名: 日立靴寸 (黑色)
 识别号: GLKS-K15
 规格: 120*(10/16)

NAME: Hitachi
 Guide Shoe Lining (black)
 ITEM NO.: GLKS-K15
 SPECIFICATION: 120*(10/16)



品名: W靴头
 识别号: GLKS-K16
 规格: 10/16

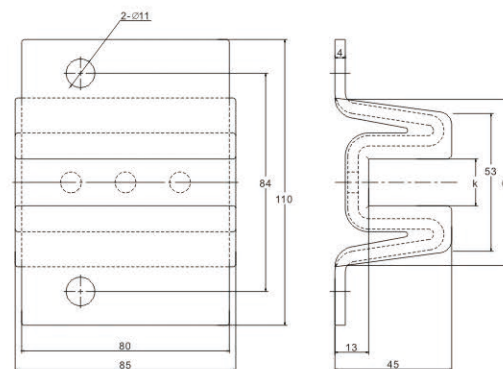
NAME: W Head Of
 Guide Shoe Lining
 ITEM NO.: GLKS-K16
 SPECIFICATION: 10/16



K 靴衬系列 SHOE LINING SERIES

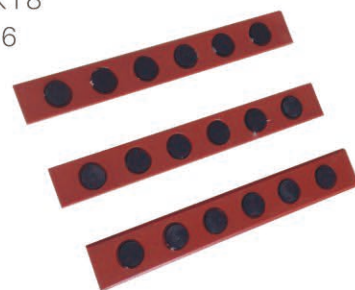
品名：永大靴头
识别号：GLKS-K17
规格：16

NAME: Yungtay
Guide Shoe Lining
ITEM NO.: GLKS-K17
SPECIFICATION: 16



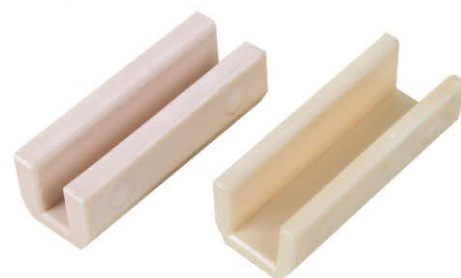
品名：高速三合一靴寸
识别号：GLKS-K18
规格：16

NAME: High-speed Guide Shoe Lining
ITEM NO.: GLKS-K18
SPECIFICATION: 16



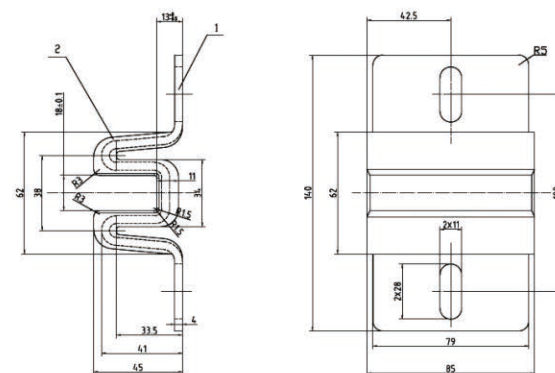
品名：通力80mm靴寸
识别号：GLKS-K19
规格：80*(10/16)

NAME: Kone 80mm Guide Shoe Lining
ITEM NO.: GLKS-K19
SPECIFICATION: 80*(10/16)



品名：W靴头加长型
识别号：GLKS-K20
规格：10*16

NAME: W Head Of Guide Shoe Lining (Extended Type)
ITEM NO.: GLKS-K20
SPECIFICATION: 10*16



REPAIR BOX SERIES 检修箱系列

品名：A型轿顶检修箱
识别号：GLKS-L01
NAME: Car Roof Repair Box(type A)
ITEM NO.: GLKS-L01



品名：B型轿顶检修箱
识别号：GLKS-L02
NAME: Car Roof Repair Box (type B)
ITEM NO.: GLKS-L02



品名：C型轿顶检修箱
识别号：GLKS-L03
NAME: Car Roof Repair Box(type C)
ITEM NO.: GLKS-L03



品名：D型轿顶检修箱
识别号：GLKS-L04
NAME: Car Roof Repair Box(type D)
ITEM NO.: GLKS-L04



品名：A型轿底检修灯
识别号：GLKS-L05
NAME: Car Bottom Repair Box(type A)
ITEM NO.: GLKS-L05



品名：广日底坑检修箱
识别号：GLKS-L06
NAME: Guangri Car Bottom Repair Box
ITEM NO.: GLKS-L06



品名: 1375-I 限速器开关
 识别号: GLKS-M01
 NAME: 1375-I Governor Switch
 ITEM NO.: GLKS-M01



品名: 1375-III 限速器开关
 识别号: GLKS-M02
 NAME: 1375-III Governor Switch
 ITEM NO.: GLKS-M02



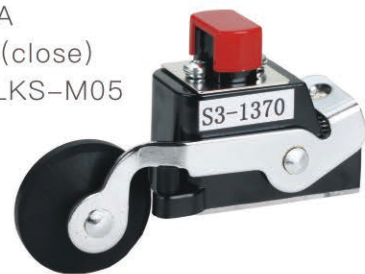
品名: 121轿门开关 (1375-IV)
 识别号: GLKS-M03
 NAME: 121 Car Switch (1375-IV)
 ITEM NO.: GLKS-M03



品名: 131轿门开关
 识别号: GLKS-M04
 NAME: 131 Car Switch
 ITEM NO.: GLKS-M04



品名: 1370A 限位开关 (常闭)
 识别号: GLKS-M05
 NAME: 1370A
 Limit Switch (close)
 ITEM NO.: GLKS-M05



品名: 1371A 限位开关 (常开)
 识别号: GLKS-M06
 NAME: 1370A
 Limit Switch (open)
 ITEM NO.: GLKS-M06



品名: AZ-06副触点开关
 识别号: GLKS-M07
 NAME: AZ-06 Auxiliary Switch
 ITEM NO.: GLKS-M07



品名: AZ-05副触点开关
 识别号: GLKS-M08
 NAME: AZ-05 Auxiliary Switch
 ITEM NO.: GLKS-M08



品名: UKS开关
 识别号: GLKS-M09
 NAME: UKS Switch
 ITEM NO.: GLKS-M09



品名: ZR236开关
 识别号: GLKS-M11
 NAME: ZR236 Switch
 ITEM NO.: GLKS-M11



品名: 双稳态磁开关
 识别号: GLKS-M13
 NAME: Magnetic Switch
 ITEM NO.: GLKS-M13



品名: AZ-01副触点开关
 识别号: GLKS-M15
 NAME: AZ-01 Auxiliary Switch
 ITEM NO.: GLKS-M15



品名: UKT开关
 识别号: GLKS-M10
 NAME: UKT Switch
 ITEM NO.: GLKS-M10



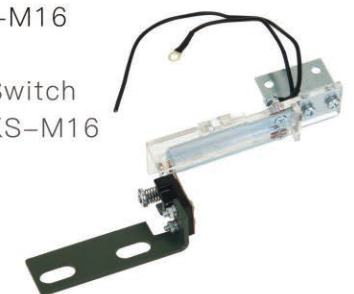
品名: TR236开关
 识别号: GLKS-M12
 NAME: TR236 Switch
 ITEM NO.: GLKS-M12



品名: 迅达双稳态磁开关
 识别号: GLKS-M14
 NAME: Schindler Magnetic Switch
 ITEM NO.: GLKS-M14



品名: AZ-02被动门开关
 识别号: GLKS-M16
 NAME: AZ-02
 Passive Door Switch
 ITEM NO.: GLKS-M16



品名: 超载开关
 识别号: GLKS-M17
 NAME: Overload Switch
 ITEM NO.: GLKS-M17



品名: 广日凸轮开关
 识别号: GLKS-M18
 NAME: GuangRi Switch
 ITEM NO.: GLKS-M18



品名: 星玛限位开关
 识别号: GLKS-M19
 NAME: Sigma Travel Switch
 ITEM NO.: GLKS-M19



品名: YG-1感应器
 识别号: GLKS-M20
 NAME: Sensor
 ITEM NO.: GLKS-M20



品名: 蒂森开关
 识别号: GLKS-M21
 NAME: Thyssen Switch
 ITEM NO.: GLKS-M21



品名: 安全触板开关
 识别号: GLKS-M22
 NAME: Safety Contact Plate Switch
 ITEM NO.: GLKS-M22



品名: 佛马特开关
 识别号: GLKS-M23
 NAME: Fumate Switch
 ITEM NO.: GLKS-M23



品名: 通力光电开关
 识别号: GLKS-M24
 备注: 61U/61N/30
 NAME: KONE Photoelectric Switch
 ITEM NO.: GLKS-M24
 REMARKS: 61U/61N/30



品名: OTIS副触点开关
 识别号: GLKS-M25
 NAME: OTIS Switch
 ITEM NO.: GLKS-M25



品名: 电磁铁
 识别号: GLKS-M27
 NAME: Electromagnet
 ITEM NO.: GLKS-M27



品名: 光电开关(A)
 识别号: GLKS-M29
 NAME: Photoelectric Switch(A)
 ITEM NO.: GLKS-M29



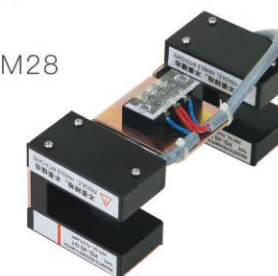
品名: 光电开关(C)
 识别号: GLKS-M31
 NAME: Photoelectric Switch(C)
 ITEM NO.: GLKS-M31



品名: 星玛奥的斯控制开关
 识别号: GLKS-M26
 NAME: Sigma Otis Control Switch
 ITEM NO.: GLKS-M26



品名: 平层感应器YG-25
 识别号: GLKS-M28
 NAME: Sensor
 ITEM NO.: GLKS-M28



品名: 光电开关(B)
 识别号: GLKS-M30
 NAME: Photoelectric Switch(B)
 ITEM NO.: GLKS-M30



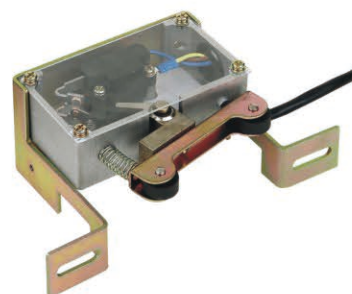
品名: 光电开关(D)
 识别号: GLKS-M32
 NAME: Photoelectric Switch(D)
 ITEM NO.: GLKS-M32



品名：通力光电开关
 识别号：GLKS-M33
 备注：77N/77S/77U
 NAME: KONE Photoelectric Switch
 ITEM NO.: GLKS-M33
 REMARKS: 77N/77S/77U



品名：现代轿门开关
 识别号：GLKS-M34
 NAME: Hyundai Car Switch
 ITEM NO.: GLKS-M34



品名：AZ-03副触点开关
 识别号：GLKS-M35
 NAME: Auxiliary Contact Switch
 ITEM NO.: GLKS-M35



品名：复位开关
 识别号：GLKS-M36
 NAME: Reset Switch
 ITEM NO.: GLKS-M36



品名：电子称重开关
 识别号：GLKS-M37
 NAME: Electronic Weighing Switch
 ITEM NO.: GLKS-M37



品名：YG-1感应器(东海牌)
 识别号：GLKS-M38
 NAME: Sensor
 ITEM NO.: GLKS-M38



品名：三菱门滑块(PVC/橡胶)
 识别号：GLKS-N01
 NAME: MITSUBISHI Door Slide
 ITEM NO.: GLKS-N01



品名：小铁板门滑块
 识别号：GLKS-N02
 NAME: Door Slide
 ITEM NO.: GLKS-N02



品名：广日门滑块
 识别号：GLKS-N03
 NAME: Guangri Door Slide
 ITEM NO.: GLKS-N03



品名：康力门滑块
 识别号：GLKS-N04
 NAME: Kangli Door Slide
 ITEM NO.: GLKS-N04



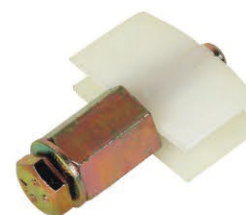
品名：迅达门滑块
 识别号：GLKS-N05
 NAME: Schindler Door Slide
 ITEM NO.: GLKS-N05



品名：苏迅门滑块
 识别号：GLKS-N06
 NAME: Suxun Door Slide
 ITEM NO.: GLKS-N06



品名：西尔康门滑块
 识别号：GLKS-N07
 NAME: Selcom Door Slide
 ITEM NO.: GLKS-N07



品名：现代门滑块
 识别号：GLKS-N08
 NAME: Hyundai Door Slide
 ITEM NO.: GLKS-N07



品名：博林特门滑块
 识别号：GLKS-N09
 NAME: BLT Door Slide
 ITEM NO.: GLKS-N09

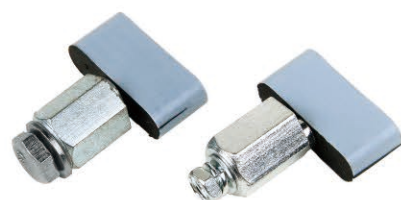


N. 门滑块系列 DOOR SLIDE SERIES

品名: 东芝门滑块
识别号: GLKS-N10
NAME: Toshiba Door Slide
ITEM NO.: GLKS-N10



品名: 易升门滑块
识别号: GLKS-N11
NAME: Door Slide
ITEM NO.: GLKS-N11



品名: 星玛门滑块
识别号: GLKS-N12
NAME: Sigma Door Slide
ITEM NO.: GLKS-N12



品名: 特殊螺母
识别号: GLKS-N13
规格: $\phi 4$ 、 $\phi 5$ 、 $\phi 6$
NAME: Nut
ITEM NO.: GLKS-N13
SPECIFICATION: $\phi 4$ 、 $\phi 5$ 、 $\phi 6$



品名: 富士达门滑块
识别号: GLKS-N14
NAME: Fujitech Door Slider
ITEM NO.: GLKS-N14



品名: 蒂森门滑块
识别号: GLKS-N15
NAME: Thyssen Door Slider
ITEM NO.: GLKS-N15



品名: 永大日立门滑块
识别号: GLKS-N16
NAME: Yongda Hitachi Door Slider
ITEM NO.: GLKS-N16



品名: 56门挂轮
识别号: GLKS-O01
规格: 56*6201*14
NAME: Door Hanging Wheel
ITEM NO.: GLKS-O01
SPECIFICATION: 56*6201*14



品名: 72门挂轮
识别号: GLKS-O03
规格: 72*6202*15
NAME: Door Hanging Wheel
ITEM NO.: GLKS-O03
SPECIFICATION: 72*6202*15



品名: 161门刀门球
识别号: GLKS-O05
规格: 46*6201*13
NAME: Door Hanging Wheel
ITEM NO.: GLKS-O05
SPECIFICATION: 46*6201*13



品名: 85奥的斯门挂轮
识别号: GLKS-O07
规格: 85*6204*20
NAME: Otis Door Hanging Wheel
ITEM NO.: GLKS-O07
SPECIFICATION: 85*6204*20



WHEEL SERIES 轮子系列 O

品名: 60东芝轮
识别号: GLKS-O02
规格: 60*6203*16
NAME: Toshiba Door Hanging Wheel
ITEM NO.: GLKS-O02
SPECIFICATION: 60*6203*16



品名: 161A门球
识别号: GLKS-O04
规格: 60*6002*16
NAME: Door Hanging Wheel
ITEM NO.: GLKS-O04
SPECIFICATION: 60*6002*16



品名: 48门挂轮
识别号: GLKS-O06
规格: 48*6200*14
NAME: Door Hanging Wheel
ITEM NO.: GLKS-O06
SPECIFICATION: 48*6200*14



品名: 奥的斯双槽轮
识别号: GLKS-O08
规格: 140*6204*20
NAME: Otis Door Hanging Wheel (Double Groove)
ITEM NO.: GLKS-O08
SPECIFICATION: 140*6204*20



品名: 90铁皮轮
 识别号: GLKS-O09
 规格: 90*6200*11
 NAME: Iron Wheel
 ITEM NO.: GLKS-O09
 SPECIFICATION: 90*6200*11



品名: 90铝绳轮
 识别号: GLKS-O10
 规格: 90*6200*11
 NAME: Aluminum Wire Wheel
 ITEM NO.: GLKS-O10
 SPECIFICATION: 90*6200*11



品名: 128铝绳轮
 识别号: GLKS-O11
 规格: 128*6202*14
 NAME: Aluminum Wire Wheel
 ITEM NO.: GLKS-O11
 SPECIFICATION: 128*6202*14



品名: 200三菱涨紧轮
 识别号: GLKS-O12
 NAME: MITSUBISHI 200 Tension Wheel
 ITEM NO.: GLKS-O12



品名: 240三菱涨紧轮
 识别号: GLKS-O13
 规格: 240*6201*20
 NAME: MITSUBISHI 240 Tension Wheel
 ITEM NO.: GLKS-O13
 SPECIFICATION: 240*6201*20



品名: 89绳轮
 识别号: GLKS-O14
 规格: 89*6203*18
 NAME: 89 Wheel
 ITEM NO.: GLKS-O14
 SPECIFICATION: 89*6203*18



品名: 凸轮开关
 识别号: GLKS-O15
 NAME: Wheel
 ITEM NO.: GLKS-O15



品名: 限速器导轮
 识别号: GLKS-O16
 NAME: Governor Wheel
 ITEM NO.: GLKS-O16



品名: 广日轮
 识别号: GLKS-O17
 规格: 67.5*6302*15
 NAME: Guangri Wheel
 ITEM NO.: GLKS-O17
 SPECIFICATION: 67.5*6302*15



品名: 100滚轮
 识别号: GLKS-O18
 规格: 100*6205*20
 NAME: 100 Roller Wheel
 ITEM NO.: GLKS-O18
 SPECIFICATION: 100*6205*20



品名: 62东芝轮
 识别号: GLKS-O20
 规格: 62*6203*16
 NAME: Toshiba Wheel
 ITEM NO.: GLKS-O20
 SPECIFICATION: 62*6203*16



品名: 65日立轮
 识别号: GLKS-O22
 规格: 65*6202*13
 NAME: HITACHI Wheel
 ITEM NO.: GLKS-O22
 SPECIFICATION: 65*6202*13



品名: 84门挂轮
 识别号: GLKS-O24
 规格: 84*6204*17.5
 NAME: 84 Door Hanging Wheel
 ITEM NO.: GLKS-O24
 SPECIFICATION: 84*6204*17.5



品名: 90尼龙轮
 识别号: GLKS-O19
 规格: 90*6200*11
 NAME: 90 Nylon Wheel
 ITEM NO.: GLKS-O19
 SPECIFICATION: 90*6200*11



品名: 66广日轮
 识别号: GLKS-O21
 规格: 66*6202*15
 NAME: Guangri Wheel
 ITEM NO.: GLKS-O21
 SPECIFICATION: 66*6202*15



品名: 70蒂森轮
 识别号: GLKS-O23
 规格: 70*6202*16
 NAME: Thyssen Wheel
 ITEM NO.: GLKS-O23
 SPECIFICATION: 70*6202*16



品名: 通力80滚轮
 识别号: GLKS-O25
 规格: 80*6203*26
 NAME: Kone 80 Roller Wheel
 ITEM NO.: GLKS-O25
 SPECIFICATION: 80*6203*26



品名: 广日160滚轮
 识别号: GLKS-O26
 规格: 160*6004*31

NAME: GuangRi
 160 Roller Wheel
 ITEM NO.: GLKS-O26
 SPECIFICATION: 160*6004*31



品名: 通力150滚轮
 识别号: GLKS-O27 (A/B)
 规格: 150*6003*38;
 150*6003*28

NAME: Kone
 150 Roller Wheel
 ITEM NO.: GLKS-O27
 SPECIFICATION: 150*6003*38;
 150*6003*28



品名: 161门球
 识别号: GLKS-O28
 规格: 45*6002*14

NAME: 161 Wheel
 ITEM NO.: GLKS-O28
 SPECIFICATION: 45*6002*14



品名: B22侧轮
 识别号: GLKS-O29

NAME: B22 Side Wheel
 ITEM NO.: GLKS-O29



品名: 门机39导向轮
 识别号: GLKS-O30
 规格: 39*6201*12

NAME: Door
 Operator Guide Wheel
 ITEM NO.: GLKS-O30
 SPECIFICATION: 39*6201*12



品名: 56轴
 识别号: GLKS-O31

NAME: 56 Axis
 ITEM NO.: GLKS-O31



品名: 66轴
 识别号: GLKS-O32

NAME: 66 Axis
 ITEM NO.: GLKS-O32



品名: 挂板压轮A型
 识别号: GLKS-O33
 规格: 25*9

NAME: Wheel Type A
 ITEM NO.: GLKS-O33
 SPECIFICATION: 25*9



品名: 挂板压轮B型
 识别号: GLKS-O34

NAME: Wheel Type B
 ITEM NO.: GLKS-O34



品名: 72轴
 识别号: GLKS-O36

NAME: 72 Axis
 ITEM NO.: GLKS-O36



品名: 中迅直板挂轮
 识别号: GLKS-O38
 规格: 75*6005*13

NAME: Gx Straight
 Hanging Wheel
 ITEM NO.: GLKS-O38
 SPECIFICATION: 75*6005*13



品名: 中迅弯板挂轮
 识别号: GLKS-O39
 规格: 75*6005*13

NAME: Gx Bend
 Hanging Wheel
 ITEM NO.: GLKS-O39
 SPECIFICATION: 75*6005*13



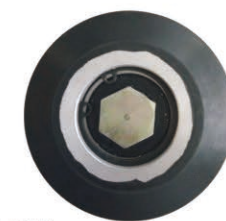
品名: 125滚轮
 识别号: GLKS-O40
 规格: 125*6303*22

NAME: 125 Roller Wheel
 ITEM NO.: GLKS-O40
 SPECIFICATION: 125*6303*22



品名: 90滚轮
 识别号: GLKS-O41
 规格: 90*6302*25

NAME: 90 Roller Wheel
 ITEM NO.: GLKS-O41
 SPECIFICATION: 90*6302*25



P 门刀系列 DOOR KNIFE SERIES

品名: 161客梯门刀(左/右)
 识别号: GLKS-P01(A/B)
 NAME: Door Knife For Passenger Elevator (161)
 ITEM NO.: GLKS-P01(A/B)



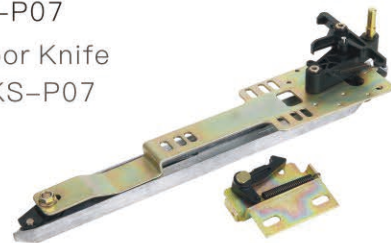
品名: 变频门刀
 识别号: GLKS-P03
 NAME: Frequency Conversion Door Knife
 ITEM NO.: GLKS-P03



品名: 中分式安全触板
 识别号: GLKS-P05
 NAME: Medium Fractional Safety Contact Plate
 ITEM NO.: GLKS-P05



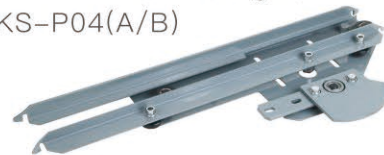
品名: 佛马特门刀
 识别号: GLKS-P07
 NAME: BLT Door Knife
 ITEM NO.: GLKS-P07



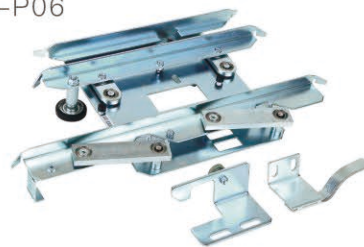
品名: 161A货梯门刀
 识别号: GLKS-P02
 NAME: Door Knife For Goods Elevator (161A)
 ITEM NO.: GLKS-P02



品名: 1407门刀(左/右)
 识别号: GLKS-P04(A/B)
 NAME: 1407 Door Knife (Left/Right)
 ITEM NO.: GLKS-P04(A/B)



品名: 西子奥的斯门刀
 识别号: GLKS-P06
 NAME: XIZI Otis Door Knife
 ITEM NO.: GLKS-P06



品名: 撞弓门刀(左/右)
 识别号: GLKS-P08(A/B)
 NAME: Door Knife (Left/Right)
 ITEM NO.: GLKS-P08(A/B)



TRIANGLE LOCK SERIES 三角锁系列 Q

品名: 三菱三角锁 (左右通用)
 识别号: GLKS-Q01
 NAME: MITSUBISHI Triangle Lock
 ITEM NO.: GLKS-Q01



品名: 广日 (老款) 钩子锁
 识别号: GLKS-Q03
 NAME: Guangri Hook Lock (Old Style)
 ITEM NO.: GLKS-Q03



品名: 永大日立三角锁
 识别号: GLKS-Q05
 NAME: Yungtay Triangle Lock
 ITEM NO.: GLKS-Q05



品名: B型小门钩子锁
 识别号: GLKS-Q07
 NAME: Hook Lock type B
 ITEM NO.: GLKS-Q07



品名: 广日三角锁
 识别号: GLKS-Q02
 NAME: Guangri Triangle Lock
 ITEM NO.: GLKS-Q02



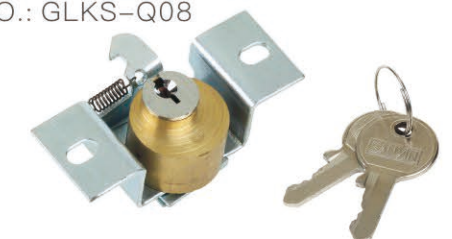
品名: 广日 (新款) 钩子锁
 识别号: GLKS-Q04
 NAME: Guangri Hook Lock (New Style)
 ITEM NO.: GLKS-Q04



品名: A型小门钩子锁
 识别号: GLKS-Q06
 NAME: Hook Lock type A
 ITEM NO.: GLKS-Q06



品名: C型钩子锁
 识别号: GLKS-Q08
 NAME: Hook Lock type C
 ITEM NO.: GLKS-Q08



Q 三角锁系列 TRIANGLE LOCK SERIES

品名: A型钥匙
 识别号: GLKS-Q09
 NAME: Key Type A
 ITEM NO.: GLKS-Q09



品名: B型钥匙
 识别号: GLKS-Q10
 NAME: Key Type B
 ITEM NO.: GLKS-Q10



品名: C型钥匙
 识别号: GLKS-Q11
 NAME: Key Type C
 ITEM NO.: GLKS-Q11



品名: QKS9迅达三角锁
 识别号: GLKS-Q12
 NAME: Schindler Triangle Lock
 ITEM NO.: GLKS-Q12



品名: 三菱三孔三角锁
 识别号: GLKS-Q13
 NAME: MITSUBISHI Triangle Lock (three holes)
 ITEM NO.: GLKS-Q13



品名: 西继三角锁
 识别号: GLKS-Q14
 NAME: XJ Triangle Lock
 ITEM NO.: GLKS-Q14



品名: 富士达三角锁
 识别号: GLKS-Q15
 NAME: FUJITEC Triangle Lock
 ITEM NO.: GLKS-Q15



品名: 现代三角锁
 识别号: GLKS-Q16
 NAME: Hyundai Triangle Lock
 ITEM NO.: GLKS-Q16



WALKIE-TALKIE SERIES 对讲机系列 R

品名: 12局对讲主机
 识别号: GLKS-R01
 NAME: Walkie-talkie
 ITEM NO.: GLKS-R01



品名: 4局对讲主机
 识别号: GLKS-R02
 NAME: Walkie-talkie
 ITEM NO.: GLKS-R02



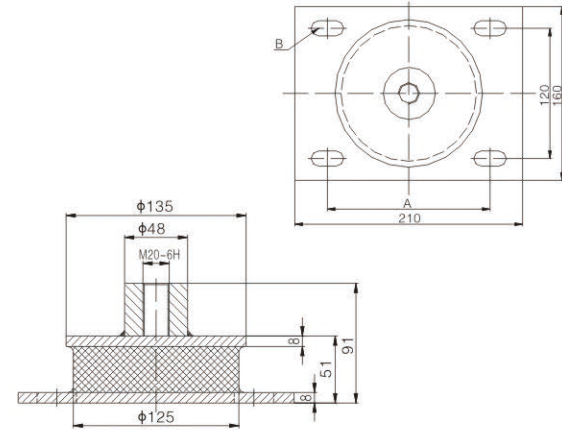
品名: 5方通话对讲
 识别号: GLKS-R03
 NAME: Walkie-talkie
 ITEM NO.: GLKS-R03



品名: 3方通话对讲
 识别号: GLKS-R04
 NAME: Walkie-talkie
 ITEM NO.: GLKS-R04



品名: 曳引机圆型减震垫
 识别号: GLKS-S01
 NAME: Damping Pad
 ITEM NO.: GLKS-S01



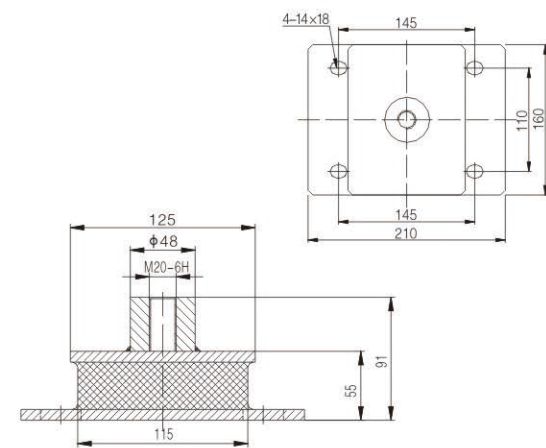
品名: 电机减震垫
 识别号: GLKS-S04
 NAME: Damping Pad For Electric Machinery
 ITEM NO.: GLKS-S04



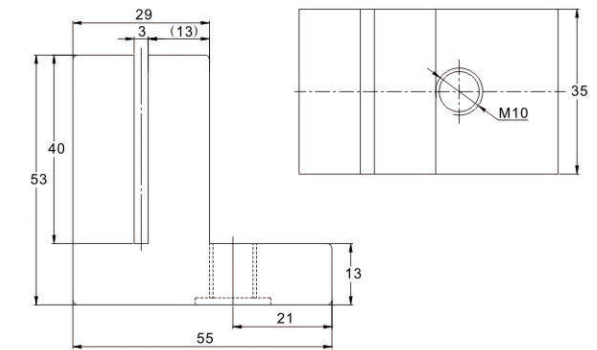
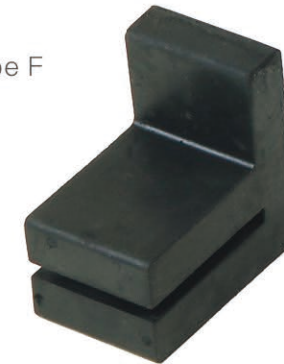
品名: 轿顶卡板
 识别号: GLKS-S05
 NAME: Car Card
 ITEM NO.: GLKS-S05



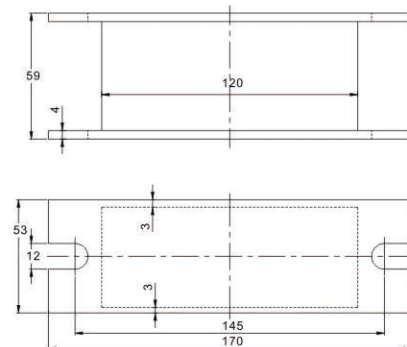
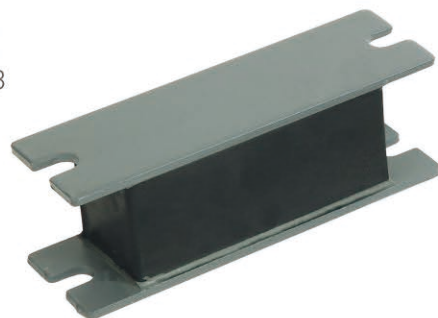
品名: 曳引机方型减震垫
 识别号: GLKS-S02
 NAME: Damping Pad
 ITEM NO.: GLKS-S02



品名: F型减震垫
 识别号: GLKS-S06
 NAME: Damping Pad Type F
 ITEM NO.: GLKS-S06



品名: H型轿厢减震垫
 识别号: GLKS-S03
 NAME: Damping Pad
 ITEM NO.: GLKS-S03



品名: 压块接头
 识别号: GLKS-S07
 NAME: Press Block Joint
 ITEM NO.: GLKS-S07



品名: 减震垫
 识别号: GLKS-S08
 NAME: Damping Pad
 ITEM NO.: GLKS-S08



T 报站钟系列 STATION CLOCK SERIES

品名：电子到站钟
 识别号：GLKS-T01
 NAME: Electronics Arrival Bell
 ITEM NO.: GLKS-T01



品名：机械到站钟
 识别号：GLKS-T02
 NAME: Mechanical Arrival Bell
 ITEM NO.: GLKS-T02



品名：警示灯
 识别号：GLKS-T03
 NAME: Warning Light
 ITEM NO.: GLKS-T03



品名：声光报警器
 识别号：GLKS-T04
 NAME: Sound And Light Alarm
 ITEM NO.: GLKS-T04



品名：ARD停电应急装置
 识别号：GLKS-T05
 备注：二项
 NAME: ARD Emergency Power Device
 ITEM NO.: GLKS-T05
 REMARKS: Two Terms



品名：ARD停电应急装置
 识别号：GLKS-T06
 备注：三项
 NAME: ARD Emergency Power Device
 ITEM NO.: GLKS-T06
 REMARKS: Three Terms



U BUTTON SERIES 按钮系列

品名：30×30按钮
 识别号：GLKS-U01
 NAME: Button
 ITEM NO.: GLKS-U01



品名：28×32按钮
 识别号：GLKS-U02
 NAME: Button
 ITEM NO.: GLKS-U02



品名：33×33按钮
 识别号：GLKS-U03
 NAME: Button
 ITEM NO.: GLKS-U03



品名：日立按钮
 识别号：GLKS-U04
 NAME: Hitachi Button
 ITEM NO.: GLKS-U04



品名：星玛按钮
 识别号：GLKS-U05
 NAME: Sigma Button
 ITEM NO.: GLKS-U05



品名：广日按钮
 识别号：GLKS-U06
 NAME: Guangri Button
 ITEM NO.: GLKS-U06



品名：东芝按钮
 识别号：GLKS-U07
 NAME: Toshiba Button
 ITEM NO.: GLKS-U07



品名：SL-TC按钮
 识别号：GLKS-U08
 NAME: SL-TC Button
 ITEM NO.: GLKS-U08



品名：星玛按钮
 识别号：GLKS-U09
 NAME: Sigma Button
 ITEM NO.: GLKS-U09



品名: GPS-1圆电源锁
 识别号: GLKS-V01
 NAME: Power Supply Lock
 ITEM NO.: GLKS-V01



品名: GPS-2方电源锁
 识别号: GLKS-V02
 NAME: Power Supply Lock
 ITEM NO.: GLKS-V02



品名: SK-F电源锁
 识别号: GLKS-V03
 NAME: Power Supply Lock
 ITEM NO.: GLKS-V03



品名: SK-H电源锁
 识别号: GLKS-V04
 NAME: Power Supply Lock
 ITEM NO.: GLKS-V04



品名: 东芝电源锁
 识别号: GLKS-V05
 NAME: Toshiba
 Power Supply Lock
 ITEM NO.: GLKS-V05



品名: GPS-E电源锁
 识别号: GLKS-V06
 NAME: Power Supply Lock
 ITEM NO.: GLKS-V06



品名: ZKS电源锁
 识别号: GLKS-V07
 NAME: Power Supply Lock
 ITEM NO.: GLKS-V07



品名: 日立基站锁
 识别号: GLKS-V08
 NAME: Hitachi Base Station Lock
 ITEM NO.: GLKS-V08



品名: 层门挂板
 识别号: GLKS-W01
 NAME: Hanging
 Plate For Landing Door
 ITEM NO.: GLKS-W01



品名: 门机挂板
 识别号: GLKS-W02
 NAME: Hanging
 Plate For Operator
 ITEM NO.: GLKS-W02



品名: 90绳轮组件 (Z型)
 识别号: GLKS-W03
 NAME: Rope Wheel
 ITEM NO.: GLKS-W03



品名: 层门传动钢丝绳
 识别号: GLKS-W04
 NAME: Wire Rope
 ITEM NO.: GLKS-W04



品名: 90滑轮组件 (L型)
 识别号: GLKS-W05
 NAME: Rope Wheel
 ITEM NO.: GLKS-W05



品名: 重锤组件 (方)
 识别号: GLKS-W06
 NAME: The Heavy
 Hammer Accessories
 ITEM NO.: GLKS-W06



品名: 门刀摇臂
 识别号: GLKS-W07
 NAME: Hanging Arms
 For Door Knife
 ITEM NO.: GLKS-W07



品名: 从动轮组件
 识别号: GLKS-W08
 NAME: Wheel Accessories
 ITEM NO.: GLKS-W08



品名: 驱动轮组件
 识别号: GLKS-W09
 NAME: Driving
 Wheel Accessories
 ITEM NO.: GLKS-W09



品名: 安装支架
识别号: GLKS-W10
NAME: Installation Stand
ITEM NO.: GLKS-W10



品名: 传动小铁板A
识别号: GLKS-W11
NAME: Driving plate
ITEM NO.: GLKS-W11



品名: 传动小铁板B
识别号: GLKS-W12
NAME: Driving plate
ITEM NO.: GLKS-W12



品名: 螺杆φ8
识别号: GLKS-W19
NAME: Threaded Rod Φ8mm
ITEM NO.: GLKS-W19



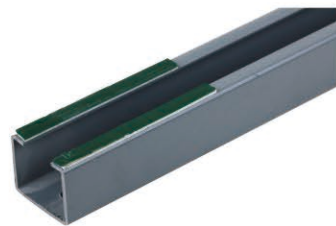
品名: 重锤组件(圆)
识别号: GLKS-W20
NAME: Weight Module
ITEM NO.: GLKS-W20



品名: 三菱门封条
识别号: GLKS-W21
NAME: Mitsubishi Door Seal
ITEM NO.: GLKS-W21



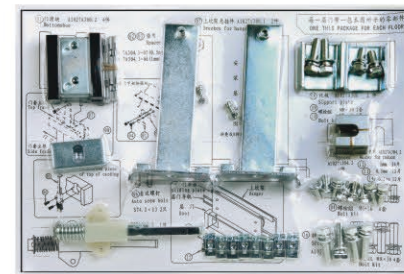
品名: 导向管
识别号: GLKS-W13
NAME: Guiding Pipe Module
ITEM NO.: GLKS-W13



品名: 卸下棒
识别号: GLKS-W14
NAME: Unlock Rod
ITEM NO.: GLKS-W14



品名: 层门小封包
识别号: GLKS-W15
NAME: Fixings for landing door
ITEM NO.: GLKS-W15



品名: 铝地坎
识别号: GLKS-W22
NAME: Sill (Aluminum)
ITEM NO.: GLKS-W22



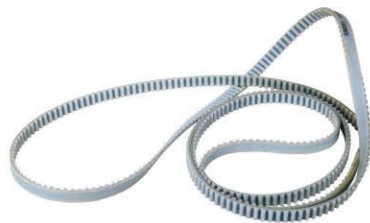
品名: YJ240欣达制动器
识别号: GLKS-W23
NAME: Xinda Brake
ITEM NO.: GLKS-W23



品名: 重锤钢丝绳
识别号: GLKS-W24
NAME: Weight wire rope
ITEM NO.: GLKS-W24



品名: 门机皮带
识别号: GLKS-W16
NAME: Belt
ITEM NO.: GLKS-W16



品名: 门机轮
识别号: GLKS-W17
NAME: Belt Pulley
ITEM NO.: GLKS-W17



品名: 关门扭力簧
识别号: GLKS-W18
NAME: Closing torsion spring
ITEM NO.: GLKS-W18



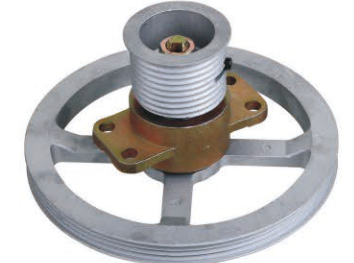
品名: 江南嘉捷门电机
识别号: GLKS-W25
NAME: SJEC Motor
ITEM NO.: GLKS-W25



品名: 螺杆φ6
识别号: GLKS-W26
NAME: Threaded Rod Φ6mm
ITEM NO.: GLKS-W26



品名: 现代门机轮
识别号: GLKS-W27
NAME: Door Operator Wheel
ITEM NO.: GLKS-W27



品名: 三相异步电机
 识别号: GLKS-W28
 NAME: Asynchronous Motor
 ITEM NO.: GLKS-W28



品名: 松下变频器
 识别号: GLKS-W29
 NAME: Frequency Converter
 ITEM NO.: GLKS-W29



品名: 同步轮 (A)
 识别号: GLKS-W30
 NAME: Wheel
 ITEM NO.: GLKS-W30



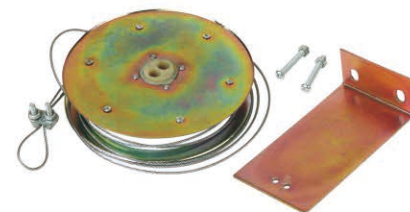
品名: 同步轮 (B)
 识别号: GLKS-W31
 NAME: Wheel
 ITEM NO.: GLKS-W31



品名: 56轿门挂板
 识别号: GLKS-W32
 NAME: Hanging Plate
 For 56 Elevator Car
 ITEM NO.: GLKS-W32



品名: 强迫关门装置
 识别号: GLKS-W33
 NAME: Closing Door Device
 ITEM NO.: GLKS-W33



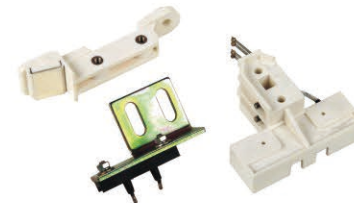
品名: OTIS门挂板
 识别号: GLKS-W34
 NAME: Hanging Plate (OTIS)
 ITEM NO.: GLKS-W34



品名: 欣达TS80门机调速板
 识别号: GLKS-W35
 NAME: Xinda TS80
 speed door plate
 ITEM NO.: GLKS-W35



品名: 触头触点(现代)
 识别号: GLKS-X01
 NAME: Hyundai Contact
 ITEM NO.: GLKS-X01



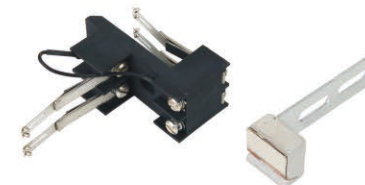
品名: 触头触点(161)
 识别号: GLKS-X04
 NAME: Contact
 ITEM NO.: GLKS-X04



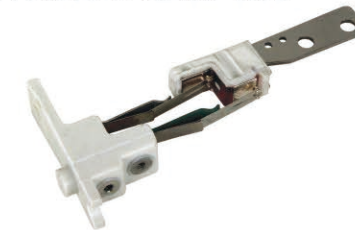
品名: 触头触点(16D)
 识别号: GLKS-X07
 NAME: Contact
 ITEM NO.: GLKS-X07



品名: 触头触点(PB152)
 识别号: GLKS-X10
 NAME: Contact
 ITEM NO.: GLKS-X10



品名: 触头触点(永大日立)
 识别号: GLKS-X02
 NAME: Yungtay Contact
 ITEM NO.: GLKS-X02



品名: 触头触点(161A)
 识别号: GLKS-X05
 NAME: Contact
 ITEM NO.: GLKS-X05



品名: 触头触点(广日)
 识别号: GLKS-X08
 NAME: Guangri Contact
 ITEM NO.: GLKS-X08



品名: 羊角触点
 识别号: GLKS-X11
 NAME: Contact
 ITEM NO.: GLKS-X11



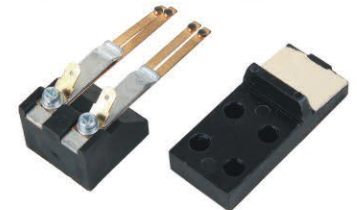
品名: 触头触点(富士达)
 识别号: GLKS-X03
 NAME: Fujitec Contact
 ITEM NO.: GLKS-X03



品名: 触头触点(展鹏)
 识别号: GLKS-X06
 NAME: Contact
 ITEM NO.: GLKS-X06



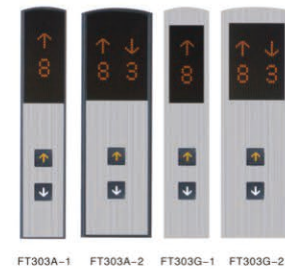
品名: 触头触点(东芝)
 识别号: GLKS-X09
 NAME: Toshiba Contact
 ITEM NO.: GLKS-X09



品名: 触头(LG星玛)
 识别号: GLKS-X12
 NAME: LG Sigma Contact
 ITEM NO.: GLKS-X12



识别号: GLKS-Y01
ITEM NO.: GLKS-Y01



安装尺寸 Installation Dimension (mm)

层站 Landing	面板尺寸 A(mm)	箱体尺寸 B(mm)
2-13F	1290*165	1250*155*72
14-22F	1490*165	1450*155*72
23-32F	1690*165	1650*155*72

FT-303G-1面板尺寸: 90*510 箱体尺寸: 480*80*65
FT-303G-2面板尺寸: 145*510 箱体尺寸: 480*132*65

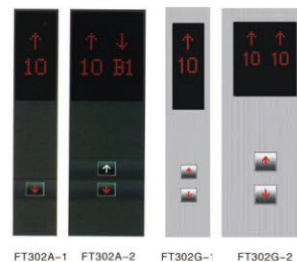
特点和规格

不锈钢面板 表面处理样式可选 (钛金.镜面.发纹等)
按钮型号可供选择: AK052
信号输入方式: 七段码、BCD码、格雷码或二进制码;
有“超载”等文字显示功能;
具备内置检修功能盒;
铰链开启式面板结构,左或有开启.

Feature & Specification

Face plate: mirror finished stainless steel .hairline-finished stainless steel. titanium finished stainless steel
Various push buttons for your selection:AK052
Super-thin indicator core: Signal input mode; 7segment. BCDcode. Grey code or Binary code; "OVERLOAD"are displayed;
Internal error detection and correction function box;
Hinged face plate can be opened from left or right.

识别号: GLKS-Y02
ITEM NO.: GLKS-Y02



安装尺寸 Installation Dimension (mm)

层站 Landing	面板尺寸 A(mm)	箱体尺寸 B(mm)
2-13F	772*165	758*156*77
14-23F	987*165	973*156*77
24-33F	1202*165	1188*156*77

FT-302-1面板尺寸: 90*450 箱体尺寸: 440*80*65
FT-302-2面板尺寸: 142*450 箱体尺寸: 440*132*65

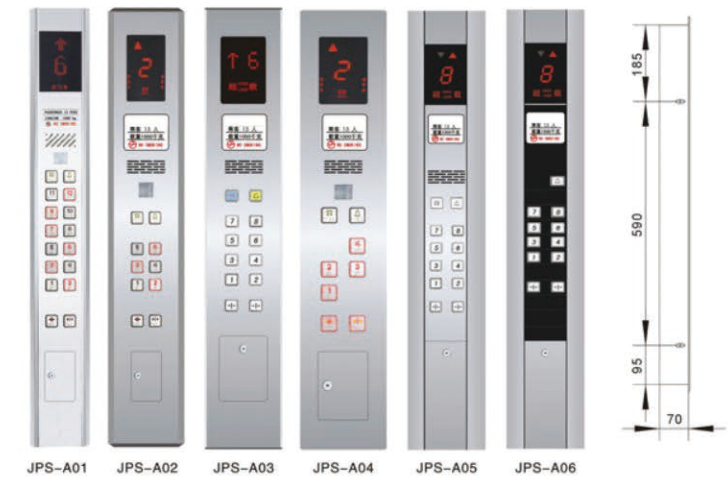
特点和规格

不锈钢面板,表面处理样式可选 (钛金.镜面.发纹等)
按钮型号可供选择: AK08
信号输入方式: 七段码、BCD码、格雷码或二进制码;
有“超载”等文字显示功能;
具备内置检修功能盒;
铰链开启式面板结构,左或有开启.

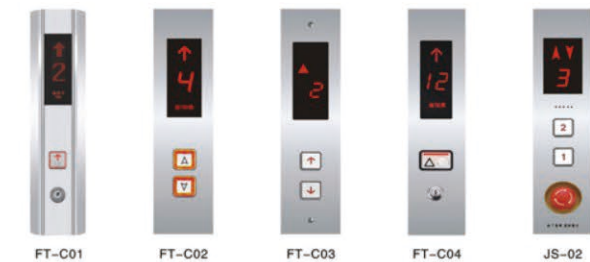
Feature & Specification

Face plate: mirror finished stainless steel .hairline-finished stainless steel. titanium finished stainless steel
Various push buttons for your selection: AK08
Super-thin indicator core: Signal input mode; 7segment. BCDcode. Grey code or Binary code; "OVERLOAD"are displayed;
Internal error detection and correction function box;
Hinged face plate can be opened from left or right.

识别号: GLKS-Y03
ITEM NO.: GLKS-Y03



2-8F 面板尺寸: 900*180 箱体尺寸: 870*160*70



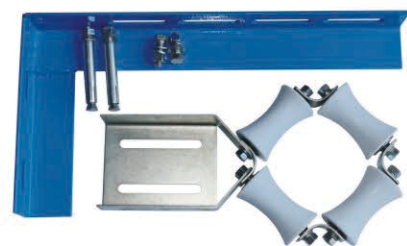
识别号: GLKS-Y04
ITEM NO.: GLKS-Y04



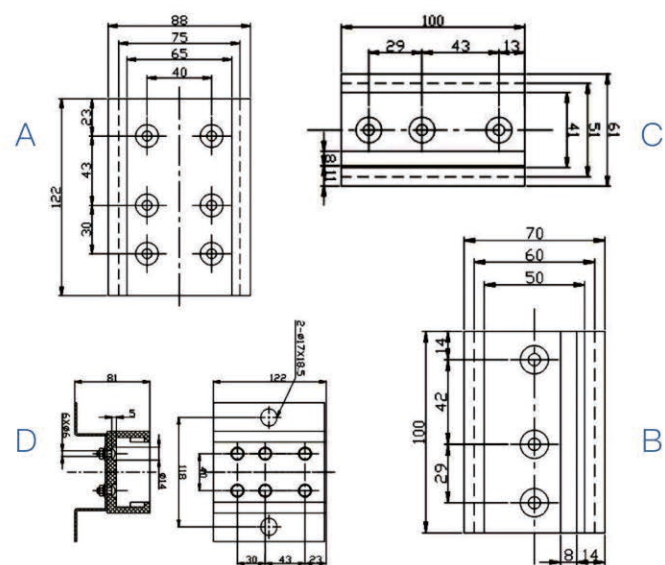
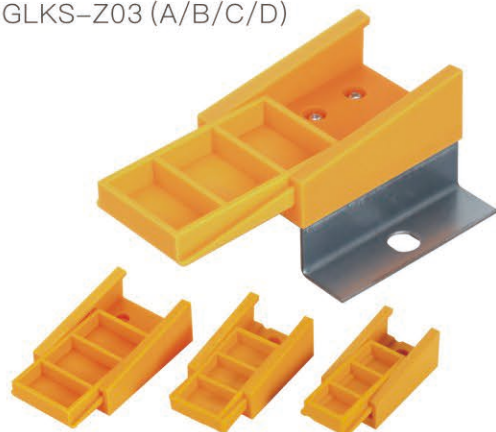
品名: 超载装置
 识别号: GLKS-Z01
 NAME: Overload Device
 ITEM NO.: GLKS-Z01



品名: 导向装置
 识别号: GLKS-Z02
 NAME: Guide Device
 ITEM NO.: GLKS-Z02



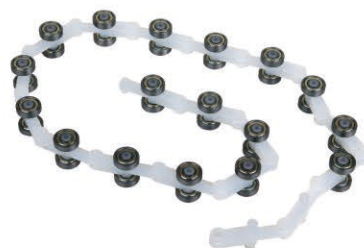
品名: 扁电缆夹
 识别号: GLKS-Z03 (A/B/C/D)
 NAME: Cable Clip
 ITEM NO.: GLKS-Z03 (A/B/C/D)



品名: 回转链
 识别号: GLKS-Z04
 NAME: Rotary Chain
 ITEM NO.: GLKS-Z04



品名: 17节回转链
 识别号: GLKS-Z05 (A/B)
 规格: A双扣、B单扣
 NAME: Rotary Chain (17)
 ITEM NO.: GLKS-Z05 (A/B)
 SPECIFICATION:
 A type: two fork,
 B type: single fork



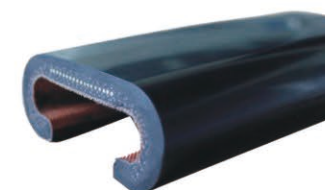
品名: 迅达铝梳齿板
 识别号: GLKS-Z06
 NAME: Schindler Comb Plate
 ITEM NO.: GLKS-Z06



品名: TS80门机位置板
 识别号: GLKS-Z08
 NAME: Speed Governing Board For Door Operator
 ITEM NO.: GLKS-Z08



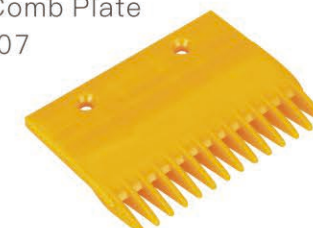
品名: 扶手带
 识别号: GLKS-Z10
 NAME: Escalator Rubber Handrail
 ITEM NO.: GLKS-Z10



品名: 包塑补偿链
 识别号: GLKS-Z12
 NAME: Chain
 ITEM NO.: GLKS-Z12



品名: 三菱梳齿板
 识别号: GLKS-Z07
 NAME: Mitsubishi Comb Plate
 ITEM NO.: GLKS-Z07



品名: 三相继电器
 识别号: GLKS-Z09
 NAME: Relay
 ITEM NO.: GLKS-Z09



品名: 麻绳补偿链
 识别号: GLKS-Z11
 NAME: Chain
 ITEM NO.: GLKS-Z11



品名: 全塑补偿链
 识别号: GLKS-Z13
 NAME: Chain
 ITEM NO.: GLKS-Z13

